

# NAPA SANITATION DISTRICT



**FY 06/07**

## **OPERATING & CAPITAL BUDGET**

(July 1, 2006 - June 30, 2007)

**RESOLUTION NO. 06-013**

**RESOLUTION OF THE NAPA SANITATION DISTRICT  
ADOPTING A BUDGET AND CAPITAL IMPROVEMENT  
PROGRAM FOR FISCAL YEAR 2006-2007**

**WHEREAS**, the Board of Directors of the Napa Sanitation District is charged with the duty of adopting an annual budget; and

**WHEREAS**, the Board of Directors of the Napa Sanitation District has studied and considered in detail a preliminary Budget and Capital Improvement Program for FY 06/07; and

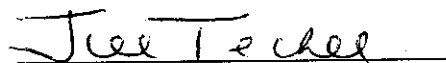
**WHEREAS**, a Two Month Interim Budget and Capital Improvement Program was submitted to and approved by the Board of Directors on June 21, 2006; and

**WHEREAS**, the Final Budget (Operating and Capital Improvement Program Expenditures, Revenues and Reserves) has been submitted to the Board of Directors (copy attached);

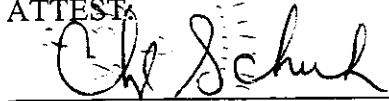
**NOW, THEREFORE BE IT RESOLVED**, that the Board of Directors, as the governing body of the Napa Sanitation District, has determined that the attached Final Budget, as submitted: Operating Fund (Fund 7800) \$13,245,137 in expenditures plus a \$898,641 transfer to the Rehabilitation Fund; Capital Expansion Fund (Fund 7810) \$7,814,422 in expenditures; Rehabilitation Fund (Fund 7830) \$9,809,878 in expenditures - and/or, if necessary, as revised by the Board of Directors - be hereby adopted as the Final Budget for the Napa Sanitation District for FY 06/07.

I hereby certify that the foregoing Resolution was duly and regularly adopted by the Board of Directors of the Napa Sanitation District, at its regularly scheduled meeting on the 2nd day of August, 2006, by the following vote:

AYES: GRAVETT, LUCE, SCHERZINGER, TECHEL, VAN GORDER  
NOES: NONE  
ABSENT: NONE  
ABSTAIN: NONE

  
Chair, Board of Directors

ATTEST:

  
Secretary, Board of Directors

# FY 06/07 OPERATING and CAPITAL BUDGET

<b>Contents</b>	<b>Page</b>
<b>Transmittal Letter</b>	<b>3</b>
<b>Recapitulation of FY 05/06 and FY 06/07</b>	<b>7</b>
<b>Figures</b>	
Organization Chart	8
Source of Funds	9
Use of Funds	9
Ten-Year Capital Expenditures	10
Fund Balance Projections	11
<b>Revenues</b>	
<u>All Funds</u>	12
<u>Operating</u>	
Operating Fund Detail	13
<u>Capital</u>	
Rehabilitation Fund Detail	14
Expansion Fund Detail	15
<b>Expenditures</b>	
<u>Operating</u>	
Summary of All Departments	16
Expenditure Detail by Department	
12 - Board of Directors	17
14 - General Manager's Office	18
16 - Administration	19
18 - Safety & Training Officer/Fleet Maintenance	20
22 - Collection System Maintenance	21
52 - Treatment Plant Operations	22
54 - Treatment Plant Maintenance	23
56 - Treatment Plant Laboratory	24
62 - Technical Services/Engineering	25
64 - Pollution Prevention/Public Outreach	26
72 - Water & Biosolids Reclamation	27
<u>Capital</u>	
Summary (Ten-Year Capital Program for FY 06/07 - FY 16/17)	28
Collection System Detail	30
Treatment Plant Detail	36
Recycling Detail	46
Other Detail	50



## NAPA SANITATION DISTRICT

*Dedicated to Preserving the Napa River for Generations to Come*

---

**DATE:** July 21, 2006

**TO:** Honorable Chair, Board of Directors and  
Customers served by the Napa Sanitation District

**FROM:** Michael Abramson, General Manager  
John R. Cuevas, Finance Manager

**SUBJECT:** FY 06/07 Operating and Capital Budget

On behalf of the entire Management Team, we are pleased to present to you the FY 06/07 Napa Sanitation District Operating and Capital Budget.

The combined Operating and Capital Budget expenditures for FY 06/07 is proposed at a total of \$30,869,437. More specifically, Operating Fund expenditures are proposed at \$13,245,137. This does not include the contribution to capital of \$898,641 made possible by the proposed Sewer Service Charge increase. Capital expenditures are proposed at \$17,624,300 and are funded through contributions from Sewer Service Charges and the use of capital reserves set aside for such purposes.

The Napa Sanitation District Budget is, in essence, the “financial General Plan” for the ensuing year. Staff anticipates expanding the contents of the budget, and in that future format, as well as its present format, the budget document will serve as a valuable source of information about the District and its programs.

### Budget Purpose

The budget is meant to serve the following four major purposes:

1. To define and manifest policy, as promulgated by the Board of Directors.
2. To serve as an operating guide for management staff to aid in the control of financial resources, while complying with general wastewater management rules and regulations, as well as generally accepted accounting principles for government.
3. To present the District’s Financial Plan for the fiscal year, illustrating appropriations and projected revenues by which the appropriations are funded.
4. To serve as a Communication Document for all parties who wish to understand how the District operates and the methods used to finance those operations.

### Budgetary Policies

Based on the staff's recommendation to the Board, staff is proposing increases to Sewer Service Charges of 15% (followed by 15% in FY 07/08 and 15% again in FY 08/09) to support catch up with inflation and fully support the operating and capital needs of the District in maintaining a safe, healthy and reliable wastewater system.

The District will also maintain a reasonable Fund Balance / Emergency Reserve to be used in the advent of any unforeseen emergency. These reserves are necessary to maintain the District's credit worthiness and to adequately provide for:

1. Economic uncertainties, local disasters, and other financial hardships or downturns in local or national economy;
2. Contingencies for unforeseen operating or capital needs; and
3. Cash flow requirements.

Construction projects and large equipment purchases are included in the Capital Improvement Plan; some minor capital outlays are included in the operating budget.

### Mission Statement

To collect, treat, beneficially reuse, and dispose of wastewater in an effective and economical manner that respects the environment, maintains the public's health and meets or exceeds all local, state and Federal regulations.

As such, the general goals of the District to support the following:

1. To provide for effective and efficient delivery of District services;
2. To design infrastructure and public facilities to be efficient, cost effective and to contribute to the cohesion and character of the community;
3. To maintain and improve infrastructure;
4. To promote economic development that stabilizes and diversifies the tax base;
5. To develop plans and pursue opportunities to protect natural resources;
6. To provide public service that assures the safety of property and persons residing, working, or visiting in and around Napa;
7. To promote intergovernmental opportunities that enhances services and/or reduces cost of operations and services to all;

8. To develop management and fiscal systems to maximize effectiveness of District services and accountability to customers;
9. To develop programs to enhance training, professionalism and technical skills of District employees;
10. To provide for a workplace that encourages growth of individual employees and a quality work environment;
11. To encourage community involvement and participation;
12. To preserve the unique current character of the community.

In addition to the objectives, staff will be developing performance measures that provide a guidepost as to the effectiveness and/or efficiency of District services. Performance measures also provide a quantitative and qualitative evaluation of District services over time.

### **Summary of the FY 06/07 Budget**

#### **Revenue Projections**

The District receives a variety of revenues from many sources, most of which must be accounted for separately and their identity kept intact. Revenue projections illustrated in the FY 06/07 budget are estimated using historical information, data collected from the Office of the Governor, the League of California Cities, the Napa County Auditor-Controller, the State Controller, the State Department of Finance and numerous financial advisors. Trends in regional development, environmental factors, and interest rates are examined. We utilize historical data, economic indicators, and in-house plans for service delivery to help predict future revenues. When combined with County, State and other information as noted above, we can produce a reasonably good but financially conservative picture of the near future.

Overall, revenues for the entire District are expected to be \$17,427,313. When compared to prior year budget, overall revenues for the entire District are projected higher by \$1,917,185. More specifically, Operating Fund revenue is projected higher by \$1,824,777, Expansion Fund revenue is projected lower by \$1,078,627, and Rehabilitation Fund revenue is projected higher by \$1,171,035.

#### **Expenditure Projections**

Overall, expenditures for the entire District are expected to be \$30,869,437. The emphasis is on capital projects with the Rehabilitation Fund proposed to spend \$6,136,780 more than prior year budget, the Expansion fund proposed to spend

\$4,496,175 more than prior year budget, while **the Operating Fund is proposed to spend \$159,146 less than prior year budget.**

**Future Year Projections**

Financial Status

There are both positive signs and areas of on-going concerns for the District's financial health. With the advent of a phased-in return of Sewer Service Charges to levels that support responsible management and rehabilitation of the system, the District's ability to serve its current customers will be enhanced. The District enjoyed an especially good weather year, combined with improved management practices, allowing it to save on polymer and related treatment costs. On the other hand, the cost of employee benefits continues to rise for the District, just as it has for both public and private enterprise across the board.

The overall financial condition of the District while currently sound still demands attention and careful thought by District management and the District Board. In preparing this year's budget, we have significantly reduced the requests of operating departments by finding new efficiencies and resetting priorities in an attempt to reduce the future impact on both capital and operating resources.

Acknowledgment

The General Manager's Office and the Administrative Division sincerely appreciate the direction offered by the District Board, and the cooperation and assistance of District staff, in addressing the financial requirements of FY 06/07. Many people throughout the organization have put a great deal of effort and skill into the production of this document.

Finally, as always, we look forward to your comments and suggestions as to this budget presentation so that we may continue to refine the document, so it will be as readable and useful as possible to the District Board, its customers, and to the Community at large.

Respectfully submitted,

/s/

Michael Abramson  
General Manager

/s/

John R. Cuevas  
Finance Manager

## BUDGET RECAP

### OPERATING - Fund 7800

Item	FY 05/06 Budget	FY 05/06 YTD	FY 05/06 Estimate	FY 06/07 Proposed
Revenues	\$12,319,001	\$11,986,050	\$12,028,667	\$14,143,778
Expenses	13,404,283	11,270,576	12,074,382	13,245,137
Transfer to Rehabilitation Fund	0	0	0	898,641
<b>SURPLUS/DEFICIT</b>	<b>(\$1,085,282)</b>	<b>\$715,474</b>	<b>(\$45,715)</b>	<b>\$0</b>

### CAPITAL - EXPANSION - Fund 7810

Item	FY 05/06 Budget	FY 05/06 YTD	FY 05/06 Estimate	FY 06/07 Proposed
Revenues	\$3,111,127	\$2,289,019	\$2,337,122	\$2,032,500
Expenses	3,318,247	591,429	2,241,981	7,814,422
<b>SURPLUS/DEFICIT</b>	<b>(\$207,120)</b>	<b>\$1,697,590</b>	<b>\$95,141</b>	<b>(\$5,781,922)</b>

### CAPITAL - REHABILITATION - Fund 7830

Item	FY 05/06 Budget	FY 05/06 YTD	FY 05/06 Estimate	FY 06/07 Proposed
Revenues	\$80,000	\$143,508	\$156,552	\$1,251,035
Transfer from Sewer Service Charges	0	0	0	898,641
Expenses	3,673,098	896,298	3,553,483	9,809,878
<b>SURPLUS/DEFICIT</b>	<b>(\$3,593,098)</b>	<b>(\$752,790)</b>	<b>(\$3,396,931)</b>	<b>(\$7,660,202)</b>

### ALL FUNDS

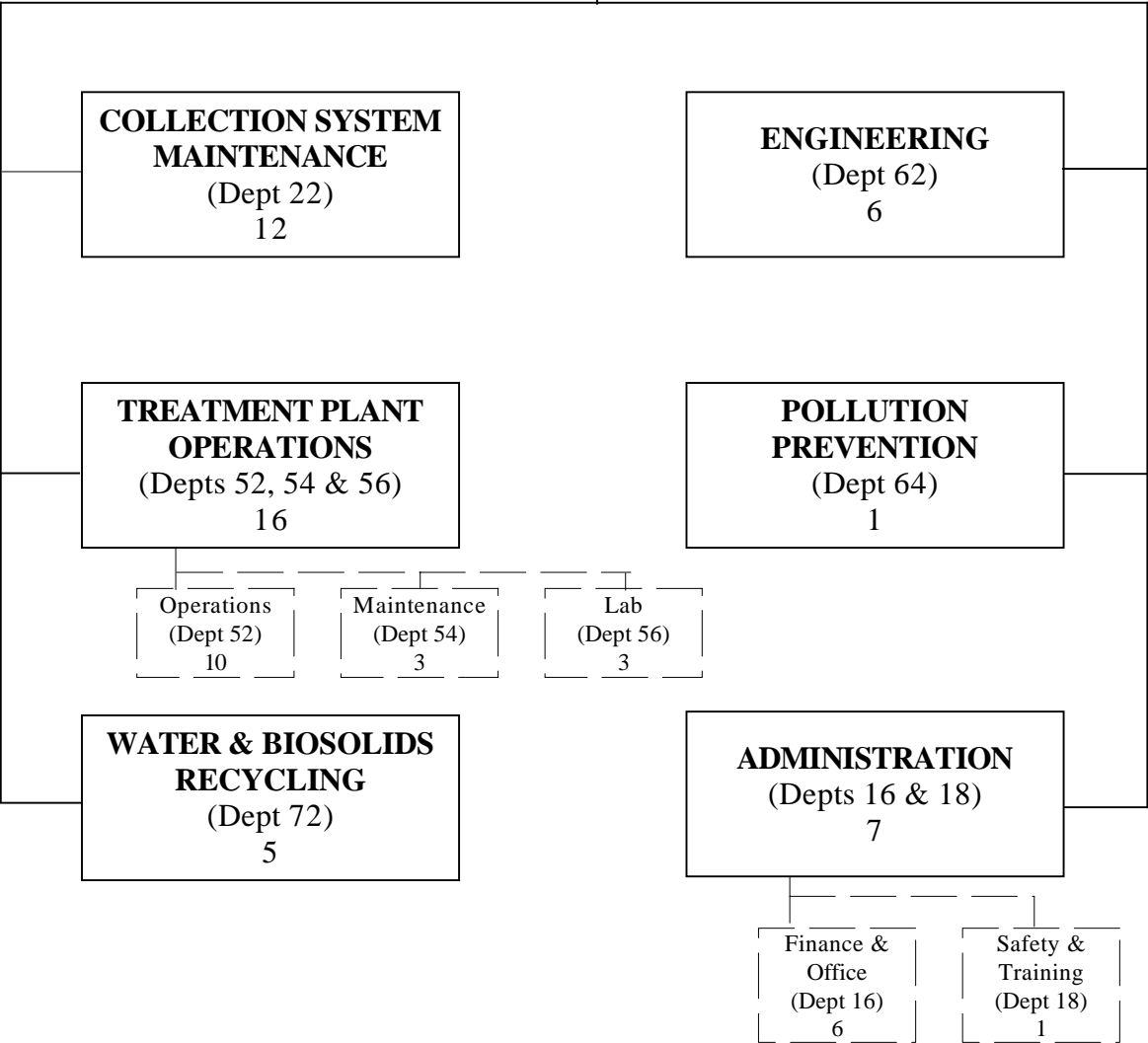
Item	FY 05/06 Budget	FY 05/06 YTD	FY 05/06 Estimate	FY 06/07 Proposed
Revenues	\$15,510,128	\$14,418,577	\$14,522,341	\$17,427,313
Expenses	20,395,628	12,758,304	17,869,846	30,869,437
<b>SURPLUS/DEFICIT</b>	<b>(\$4,885,500)</b>	<b>\$1,660,273</b>	<b>(\$3,347,505)</b>	<b>(\$13,442,124)</b>

Customers

**Legend:**  
Department Name  
(Dept Number)  
Full-Time Staff

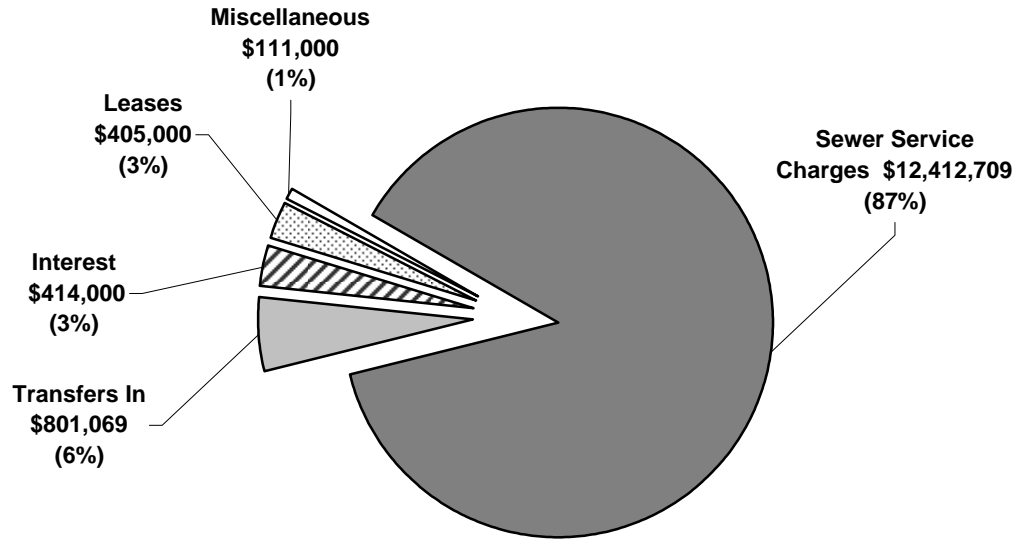
**BOARD OF DIRECTORS**  
(Dept 12)  
0

**GENERAL MANAGER &  
ASSISTANT GENERAL  
MANAGER**  
(Dept 14)  
2



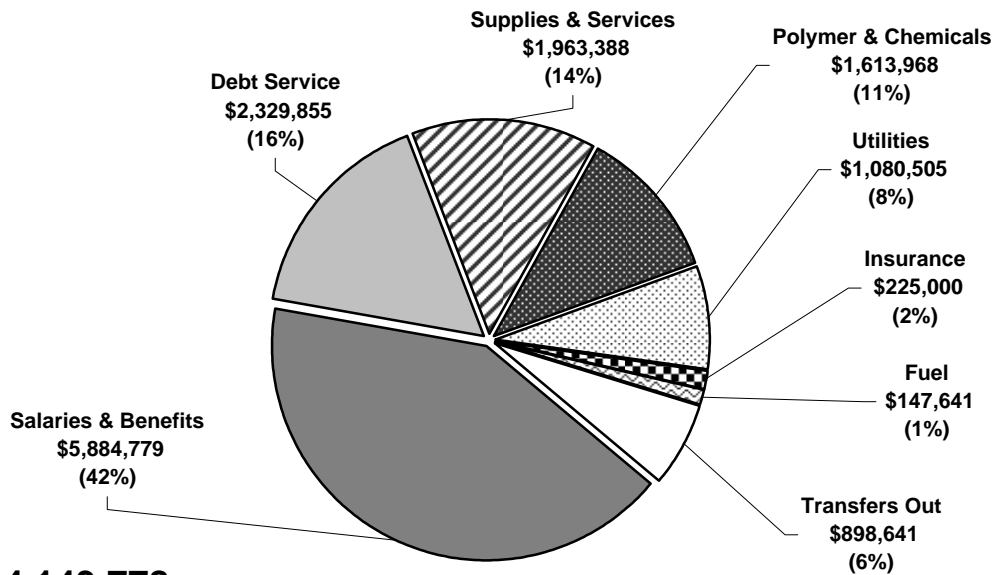
## Operating Fund - 7800

### Source of Funds



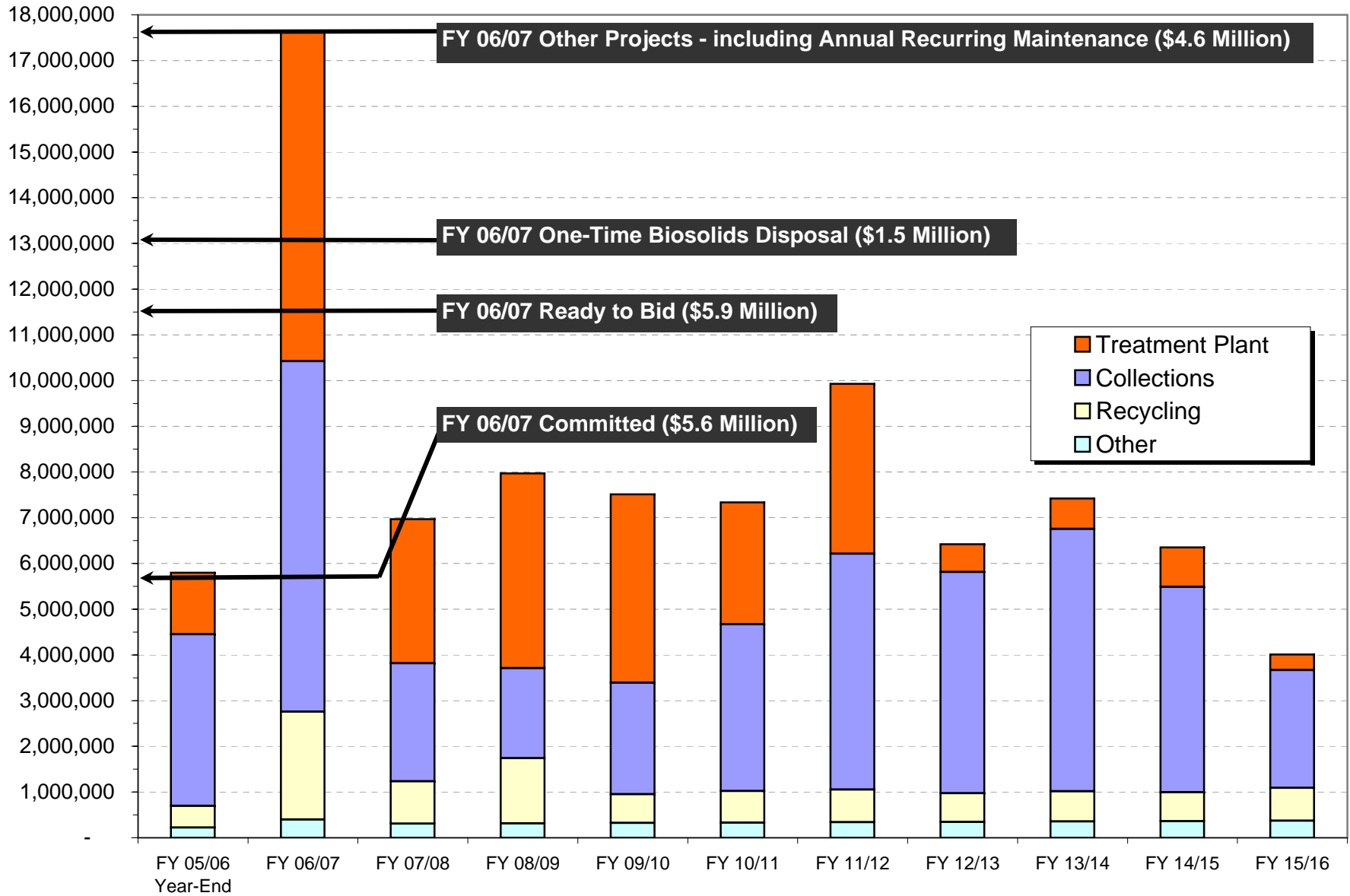
**TOTAL = \$14,143,778**

### Use of Funds



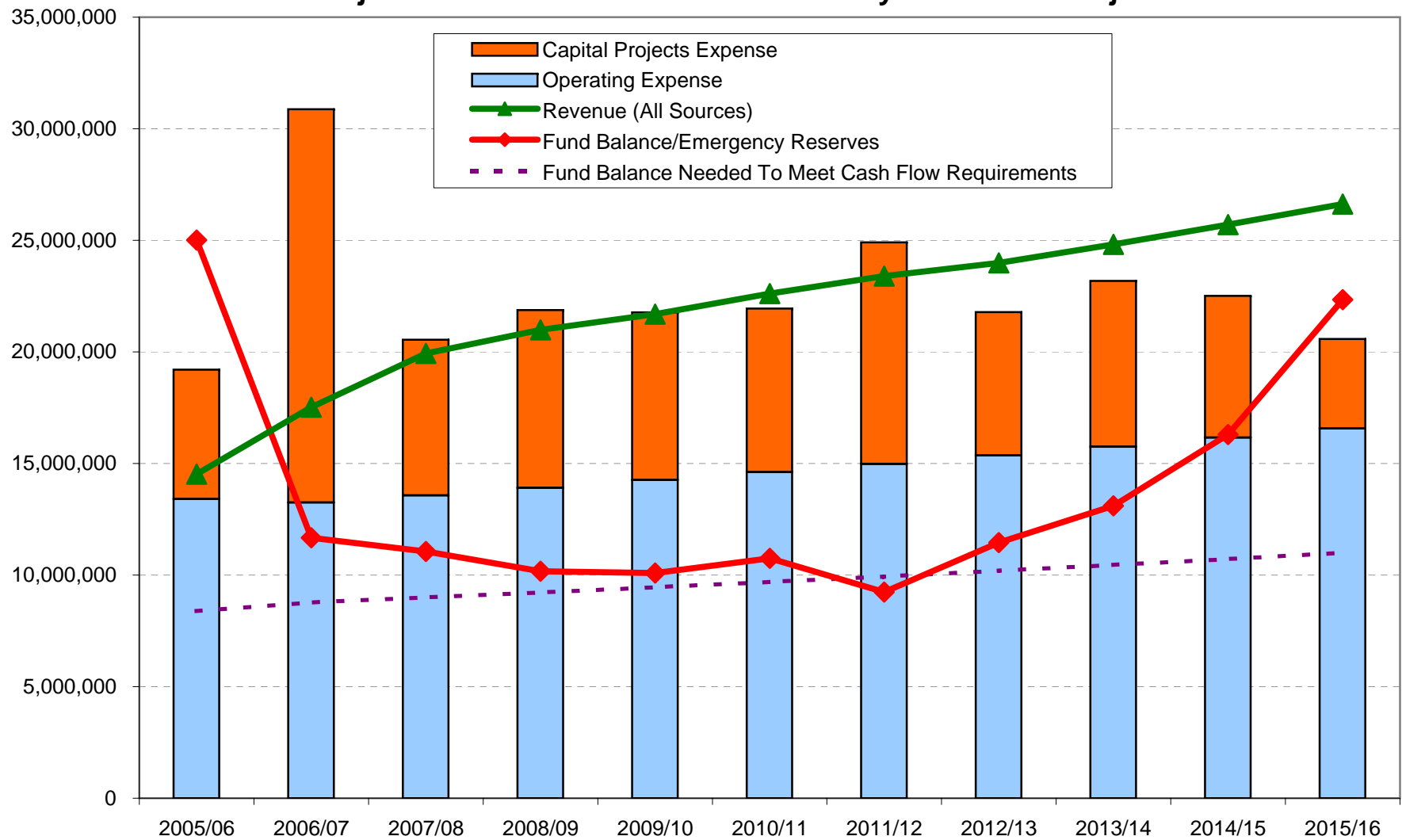
**TOTAL = \$14,143,778**

## Napa Sanitation District Ten-Year Capital Program



## Napa Sanitation District - Ten-Year Financial Overview

**With Rate Adjustment of 15%-15%-15% followed by Annual CPI Adjustments**



## Napa Sanitation District

## Revenue Worksheets

**REVENUE - ALL FUNDS**

Account	Account Description	Budget 05/06	Adjustments	Adjusted FY 05/06	YTD 05/06	Estimated 05/06	Budget 06/07	Percent Change
44-00-0300	Interest: Invested Funds	650,000	-	650,000	762,287	831,585	878,000	35.1%
44-01-0700	Land Lease	235,000	-	235,000	227,725	230,000	405,000	72.3%
<b>Revenues from Use of Money/Property</b>		<b>\$885,000</b>	<b>-</b>	<b>\$885,000</b>	<b>\$990,012</b>	<b>\$1,061,585</b>	<b>\$1,283,000</b>	<b>45.0%</b>
46-00-3000	Planning/Engineering Services	4,000	-	4,000	11,325	12,355	11,000	175.0%
46-00-3010	Planning/Engineering-House	15,000	-	15,000	10,346	11,287	11,000	(26.7%)
46-00-3020	Planning/Engineering-Street Laterals	4,000	-	4,000	4,235	4,620	4,000	-
46-00-3030	Planning/Engineering-Main	5,000	-	5,000	7,626	8,320	7,000	40.0%
46-00-3040	Planning/Engineering-Annexation	2,000	-	2,000	4,050	4,418	4,000	100.0%
46-00-3050	Planning/Engineering-Demolition	-	-	-	35	35	35	-
46-00-3060	Charges for Capital Services	1,000,000	-	1,000,000	770,397	771,000	801,069	(19.9%)
46-09-2000	Connection Fees	2,500,000	-	2,500,000	1,773,246	1,775,000	1,775,000	(29.0%)
46-09-2100	CS: Sewer Use	9,746,000	-	9,746,000	9,621,224	9,622,000	11,397,259	16.9%
46-09-2110	Sewer Use - Direct Billing	606,000	-	606,000	650,771	651,000	748,650	23.5%
46-15-1100	O/C: Dumping Fee/Permit	266,000	-	266,000	231,919	232,000	266,800	0.3%
46-15-1400	O/C: Prior Use Charges	156,000	-	156,000	-	-	-	(100.0%)
46-15-2300	O/C: Reclaimed Water Surcharge	9,127	-	9,127	6,911	7,000	7,500	(17.8%)
<b>Charges for Services</b>		<b>\$14,313,127</b>	<b>-</b>	<b>\$14,313,127</b>	<b>\$13,092,085</b>	<b>\$13,099,035</b>	<b>\$15,033,313</b>	<b>5.0%</b>
48-01-0000	O/R: Sale Fixed Assets	3,000	-	3,000	5,373	5,373	5,000	66.7%
48-02-1500	O/S: Reclaimed Water	302,000	-	302,000	180,862	197,304	200,000	(33.8%)
48-04-0000	O/R:Miscellaneous	6,000	-	6,000	47,881	47,881	5,000	(16.7%)
48-05-0000	O/R:Reimbursement	1	-	1	5,573	5,573	1,000	-
48-50-0000	O/R:Operating Transfer In	-	-	-	-	-	898,641	-
48-60-0000	O/R:Prior Year Revenue	1,000	-	1,000	96,791	105,590	100,000	9,900.0%
48-96-0000	O/FS: Sale of Property	-	-	-	-	-	800,000	-
<b>Miscellaneous Revenues</b>		<b>\$312,001</b>	<b>-</b>	<b>\$312,001</b>	<b>\$336,480</b>	<b>\$361,721</b>	<b>\$2,009,641</b>	<b>544.1%</b>
<b>TOTAL ALL REVENUES</b>		<b>\$15,510,128</b>	<b>-</b>	<b>\$15,510,128</b>	<b>\$14,418,577</b>	<b>\$14,522,341</b>	<b>\$18,325,954</b>	<b>18.2%</b>

## Napa Sanitation District

## Revenue Worksheets

**FUND 7800 - OPERATING FUND**

Account	Account Description	Budget 05/06	Adjustments	Adjusted FY 05/06	YTD 05/06	Estimated 05/06	Budget 06/07	Percent Change
44-00-0300	Interest: Invested Funds	300,000	-	300,000	328,396	358,250	414,000	38.0%
44-01-0700	Land Lease	235,000	-	235,000	227,725	230,000	405,000	72.3%
<b>Revenues from Use of Money/Property</b>		<b>\$535,000</b>	<b>-</b>	<b>\$535,000</b>	<b>\$556,121</b>	<b>\$588,250</b>	<b>\$819,000</b>	<b>53.1%</b>
46-00-3060	Charges for Capital Services	1,000,000	-	1,000,000	770,397	771,000	801,069	(19.9%)
46-09-2100	CS: Sewer Use	9,746,000	-	9,746,000	9,621,224	9,622,000	11,397,259	16.9%
46-09-2110	Sewer Use - Direct Billing	606,000	-	606,000	650,771	651,000	748,650	23.5%
46-15-1100	O/C: Dumping Fee/Permit	266,000	-	266,000	231,919	232,000	266,800	0.3%
46-15-1400	O/C: Prior Use Charges	156,000	-	156,000	-	-	-	(100.0%)
<b>Charges for Services</b>		<b>\$11,774,000</b>	<b>-</b>	<b>\$11,774,000</b>	<b>\$11,274,311</b>	<b>\$11,276,000</b>	<b>\$13,213,778</b>	<b>12.2%</b>
48-01-0000	O/R: Sale Fixed Assets	3,000	-	3,000	5,373	5,373	5,000	66.7%
48-04-0000	O/R:Miscellaneous	6,000	-	6,000	47,881	47,881	5,000	(16.7%)
48-05-0000	O/R:Reimbursement	1	-	1	5,573	5,573	1,000	-
48-60-0000	O/R:Prior Year Revenue	1,000	-	1,000	96,791	105,590	100,000	9,900.0%
<b>Miscellaneous Revenues</b>		<b>\$10,001</b>	<b>-</b>	<b>\$10,001</b>	<b>\$155,618</b>	<b>\$164,417</b>	<b>\$111,000</b>	<b>1009.9%</b>
<b>TOTAL ALL REVENUES</b>		<b>\$12,319,001</b>	<b>-</b>	<b>\$12,319,001</b>	<b>\$11,986,050</b>	<b>\$12,028,667</b>	<b>\$14,143,778</b>	<b>14.8%</b>

## Napa Sanitation District

## Revenue Worksheets

**FUND 7830 - REHABILITATION FUND**

Account	Account Description	Budget 05/06	Adjustments	Adjusted FY 05/06	YTD 05/06	Estimated 05/06	Budget 06/07	Percent Change
44-00-0300	Interest: Invested Funds	50,000	-	50,000	105,891	115,517	414,000	728.0%
<b>Revenues from Use of Money/Property</b>		<b>\$50,000</b>	<b>-</b>	<b>\$50,000</b>	<b>\$105,891</b>	<b>\$115,517</b>	<b>\$414,000</b>	<b>728.0%</b>
46-00-3000	Planning/Engineering Services	4,000	-	4,000	11,325	12,355	11,000	175.0%
46-00-3010	Planning/Engineering-House	15,000	-	15,000	10,346	11,287	11,000	(26.7%)
46-00-3020	Planning/Engineering-Street Laterals	4,000	-	4,000	4,235	4,620	4,000	-
46-00-3030	Planning/Engineering-Main	5,000	-	5,000	7,626	8,320	7,000	40.0%
46-00-3040	Planning/Engineering-Annexation	2,000	-	2,000	4,050	4,418	4,000	100.0%
46-00-3050	Planning/Engineering-Demolition	-	-	-	35	35	35	-
<b>Charges for Services</b>		<b>\$30,000</b>	<b>-</b>	<b>\$30,000</b>	<b>\$37,617</b>	<b>\$41,035</b>	<b>\$37,035</b>	<b>23.5%</b>
48-50-0000	O/R: Operating Transfer In	-	-	-	-	-	898,641	-
48-96-0000	O/FS: Sale of Property	-	-	-	-	-	800,000	-
<b>Miscellaneous Revenues</b>		<b>-</b>	<b>-</b>	<b>-</b>	<b>-</b>	<b>-</b>	<b>\$1,698,641</b>	<b>-</b>
<b>TOTAL ALL REVENUES</b>		<b>\$80,000</b>	<b>-</b>	<b>\$80,000</b>	<b>\$143,508</b>	<b>\$156,552</b>	<b>\$2,149,676</b>	<b>2587.1%</b>

## Napa Sanitation District

## Revenue Worksheets

**FUND 7810 - EXPANSION FUND**

Account	Account Description	Budget 05/06	Adjustments	Adjusted FY 05/06	YTD 05/06	Estimated 05/06	Budget 06/07	Percent Change
44-00-0300	Interest: Invested Funds	300,000	-	300,000	328,000	357,818	50,000	(83.3%)
<b>Revenues from Use of Money/Property</b>		<b>\$300,000</b>	<b>-</b>	<b>\$300,000</b>	<b>\$328,000</b>	<b>\$357,818</b>	<b>\$50,000</b>	<b>(83.3%)</b>
46-09-2000	Connection Fees	2,500,000	-	2,500,000	1,773,246	1,775,000	1,775,000	(29.0%)
46-15-2300	O/C: Reclaimed Water Surcharge	9,127	-	9,127	6,911	7,000	7,500	(17.8%)
<b>Charges for Services</b>		<b>\$2,509,127</b>	<b>-</b>	<b>\$2,509,127</b>	<b>\$1,780,157</b>	<b>\$1,782,000</b>	<b>\$1,782,500</b>	<b>(29.0%)</b>
48-02-1500	O/S: Reclaimed Water	302,000	-	302,000	180,862	197,304	200,000	(33.8%)
<b>Miscellaneous Revenues</b>		<b>\$302,000</b>	<b>-</b>	<b>\$302,000</b>	<b>\$180,862</b>	<b>\$197,304</b>	<b>\$200,000</b>	<b>(33.8%)</b>
<b>TOTAL ALL REVENUES</b>		<b>\$3,111,127</b>	<b>-</b>	<b>\$3,111,127</b>	<b>\$2,289,019</b>	<b>\$2,337,122</b>	<b>\$2,032,500</b>	<b>(34.7%)</b>

FY 05/06 BUDGET, YEAR-TO-DATE, ESTIMATED, and  
FY 06/07 PROPOSED

Account	Account Description	FY 05/06 Adopted Budget	Adjustments	FY 05/06 Adjusted Budget	FY 05/06 Estimated	FY 06/07 Adopted Budget	Percent Change
51-10-0000	Regular Salaries	3,237,179	(27,500)	3,209,679	3,038,271	3,402,457	6%
51-10-0050	Health Insurance Makeup	235,695	(7,000)	228,695	199,613	237,744	4%
51-20-0200	Overtime	182,144	-	182,144	178,370	163,791	(10%)
51-20-0600	Holiday Shift	11,056	-	11,056	7,872	9,030	(18%)
51-30-0100	Retirement	1,117,182	(17,000)	1,100,182	1,043,933	1,189,449	8%
51-30-0200	Retirement/Vacation Payoff	-	-	-	405	500	-
51-30-0300	Medicare	38,782	6,300	45,082	42,874	43,884	(3%)
51-30-0500	Group Insurance	561,701	17,500	579,201	565,851	597,644	3%
51-30-0520	Dental/Vision/Life/LTD	153,286	700	153,986	160,798	166,527	8%
51-30-1200	Workers' Comp Insurance	145,509	-	145,509	81,923	59,953	(59%)
51-30-1300	Unemployment Insurance	5,800	-	5,800	1,800	6,000	3%
51-30-2400	Employee Assistance Program	2,200	-	2,200	7,201	7,800	255%
<b>Subtotal Salaries &amp; Benefits</b>		<b>\$5,690,534</b>	<b>(\$27,000)</b>	<b>\$5,663,534</b>	<b>\$5,328,911</b>	<b>\$5,884,779</b>	<b>3.9%</b>
52-10-0000	Insurance	213,000	-	213,000	214,493	225,000	6%
52-12-1000	Office Buildings & Grounds	66,000	(4,000)	62,000	54,575	70,036	13%
52-13-9020	Vehicle Maintenance	81,330	(2,000)	79,330	103,026	105,948	34%
52-13-9030	Safety Equipment	86,380	(1,000)	85,380	58,068	53,170	(38%)
52-13-9070	Janitorial	53,520	-	53,520	57,713	60,800	14%
52-13-9100	Small Tools	94,980	2,200	97,180	83,020	83,075	(15%)
52-13-9110	Backfill & Rock	42,450	470	42,920	19,643	18,450	(57%)
52-13-9140	Sewer Supplies	158,600	20,000	178,600	195,406	228,250	28%
52-16-8900	Rain Gear/Boots	31,782	(1,000)	30,782	18,301	19,436	(37%)
52-17-0000	Office Expense (Supplies)	58,810	-	58,810	41,342	46,450	(21%)
52-17-0120	Ads and Notices	3,350	-	3,350	2,900	1,300	(61%)
52-17-1200	Postage	28,280	-	28,280	9,800	4,700	(83%)
52-18-0210	Other Contracted Services	220,550	(7,500)	213,050	193,999	199,500	(6%)
52-18-0400	Legal Expense - Special	60,000	-	60,000	104,337	106,000	77%
52-18-0500	Legal Expense - General	100,000	-	100,000	80,958	82,000	(18%)
52-18-0900	Contract Extra Help	57,000	117,000	174,000	151,215	152,940	(12%)
52-18-0910	Maintenance Agreements	118,825	11,360	130,185	130,850	122,075	(6%)
52-18-3150	Outside Laboratory Analysis	137,740	(19,230)	118,510	58,092	86,604	(27%)
52-18-5010	Director's Fees	27,100	-	27,100	21,869	21,869	(19%)
52-18-5540	Prof/Special Services	208,656	(33,000)	175,656	168,229	197,300	12%
52-20-0000	Rents & Leases	68,382	28,150	96,532	104,664	68,530	(29%)
52-23-3100	Prior Year SSC Refunds	5,000	-	5,000	-	5,000	0%
52-23-4700	Special Programs	30,300	(10,000)	20,300	19,134	20,500	1%
52-23-6000	Fuel	108,325	11,850	120,175	123,553	147,641	23%
52-23-9100	Permits & Licenses	150,343	-	150,343	101,410	110,725	(26%)
52-23-9250	Chemicals	580,194	110,700	690,894	598,632	730,167	6%
52-23-9530	Polymer	1,335,000	(195,000)	1,140,000	625,000	883,801	(22%)
52-25-0020	Continuing Education	600	-	600	2,975	3,100	417%
52-25-0050	Memberships & Publications	49,480	-	49,480	45,868	51,015	3%
52-25-0060	Travel & Meetings	46,600	-	46,600	30,678	44,615	(4%)
52-26-0050	Utilities	160,472	(2,000)	158,472	130,169	137,895	(13%)
52-26-1500	Electricity	1,004,500	-	1,004,500	867,644	942,610	(6%)
<b>Subtotal Services &amp; Supplies</b>		<b>\$5,387,549</b>	<b>\$27,000</b>	<b>\$5,414,549</b>	<b>\$4,417,563</b>	<b>\$5,030,502</b>	<b>(7.1%)</b>
53-47-1700	Somky Mortgage	86,750	-	86,750	86,750	86,750	0%
53-47-1800	C.O.P. - US Trust	2,210,850	-	2,210,850	2,210,850	2,211,000	0%
53-90-5010	Somky Property	10,000	-	10,000	10,405	10,809	8%
53-90-5020	Jamieson Canyon Property	18,100	-	18,100	19,623	20,996	16%
53-90-5030	West Napa Pump Station	500	-	500	280	300	(40%)
53-99-9999	Transfer to Capital	-	-	-	-	-	-
<b>Subtotal Other</b>		<b>\$2,326,200</b>	<b>-</b>	<b>\$2,326,200</b>	<b>\$2,327,908</b>	<b>\$2,329,855</b>	<b>0.2%</b>
<b>TOTALS</b>		<b>\$13,404,283</b>	<b>-</b>	<b>\$13,404,283</b>	<b>\$12,074,382</b>	<b>\$13,245,137</b>	<b>(1.2%)</b>

## Napa Sanitation District

BOARD OF DIRECTORS**Budget Summary - 12**

Account	Account Description	Budget 05/06	Adjustments	Adjusted FY 05/06	YTD 05/06	Estimated 05/06	Budget 06/07	Percent Change
51-30-0520	Dental/Vision/Life/LTD	963	-	963	765	707	1,075	11.7%
<b>Subtotal Salaries &amp; Benefits</b>		<b>\$963</b>	<b>-</b>	<b>\$963</b>	<b>\$765</b>	<b>\$707</b>	<b>\$1,075</b>	<b>11.7%</b>
52-10-0000	Insurance	213,000	-	213,000	214,493	214,493	225,000	5.6%
52-17-0120	Ads and Notices	500	-	500	-	-	-	(100.0%)
52-17-1200	Postage	20,000	-	20,000	-	-	-	(100.0%)
52-18-0400	Legal Expense - Special	60,000	-	60,000	104,337	104,337	106,000	76.7%
52-18-0500	Legal Expense - General	100,000	-	100,000	80,958	80,958	82,000	(18.0%)
52-18-5010	Director's Fees	27,100	-	27,100	21,869	21,869	21,869	(19.3%)
52-18-5540	Prof/Special Services	54,000	-	54,000	62,049	62,049	70,000	29.6%
52-23-3100	Prior Year SSC Refunds	5,000	-	5,000	-	-	5,000	-
52-23-4700	Special Programs	10,000	(10,000)	-	-	-	-	(100.0%)
52-25-0050	Memberships & Publications	38,610	-	38,610	36,742	38,000	39,525	2.4%
<b>Subtotal Services &amp; Supplies</b>		<b>\$528,210</b>	<b>(\$10,000)</b>	<b>\$518,210</b>	<b>\$520,448</b>	<b>\$521,706</b>	<b>\$549,394</b>	<b>4.0%</b>
<b>Subtotal Other</b>		<b>-</b>	<b>-</b>	<b>-</b>	<b>-</b>	<b>-</b>	<b>-</b>	<b>-</b>
<b>TOTAL ALL EXPENDITURES</b>		<b>\$529,173</b>	<b>(\$10,000)</b>	<b>\$519,173</b>	<b>\$521,213</b>	<b>\$522,413</b>	<b>\$550,469</b>	<b>4.0%</b>

## Napa Sanitation District

## GENERAL MANAGER'S OFFICE

## Budget Summary - 14

Account	Account Description	Budget 05/06	Adjustments	Adjusted FY 05/06	YTD 05/06	Estimated 05/06	Budget 06/07	Percent Change
51-10-0000	Regular Salaries	295,065	-	295,065	250,296	284,438	304,222	3.1%
51-10-0050	Health Insurance Makeup	11,620	-	11,620	9,628	11,147	12,756	9.8%
51-30-0100	Retirement	101,459	-	101,459	86,012	97,656	108,900	7.3%
51-30-0300	Medicare	4,328	-	4,328	3,769	4,293	4,359	0.7%
51-30-0500	Group Insurance	36,414	-	36,414	28,429	37,090	39,136	7.5%
51-30-0520	Dental/Vision/Life/LTD	9,082	-	9,082	9,825	10,247	9,159	0.8%
51-30-1200	Workers' Comp Insurance	3,682	-	3,682	2,073	2,073	1,599	(56.6%)
<b>Subtotal Salaries &amp; Benefits</b>		<b>\$461,650</b>	<b>-</b>	<b>\$461,650</b>	<b>\$390,032</b>	<b>\$446,944</b>	<b>\$480,132</b>	<b>4.0%</b>
52-13-9070	Janitorial	1,000	-	1,000	-	-	-	(100.0%)
52-16-8900	Rain Gear/Boots	240	-	240	-	-	200	(16.7%)
52-18-5540	Prof/Special Services	35,000	-	35,000	2,000	2,000	35,000	-
52-25-0050	Memberships & Publications	1,600	-	1,600	763	763	900	(43.8%)
52-25-0060	Travel & Meetings	16,900	-	16,900	12,686	12,686	12,900	(23.7%)
52-26-0050	Utilities	1,500	-	1,500	465	465	925	(38.3%)
<b>Subtotal Services &amp; Supplies</b>		<b>\$56,240</b>	<b>-</b>	<b>\$56,240</b>	<b>\$15,914</b>	<b>\$15,914</b>	<b>\$49,925</b>	<b>(11.2%)</b>
<b>Subtotal Other</b>		<b>-</b>	<b>-</b>	<b>-</b>	<b>-</b>	<b>-</b>	<b>-</b>	<b>-</b>
<b>TOTAL ALL EXPENDITURES</b>		<b>\$517,890</b>	<b>-</b>	<b>\$517,890</b>	<b>\$405,946</b>	<b>\$462,858</b>	<b>\$530,057</b>	<b>2.3%</b>

## Napa Sanitation District

ADMINISTRATION

## Budget Summary - 16

Account	Account Description	Budget 05/06	Adjustments	Adjusted FY 05/06	YTD 05/06	Estimated 05/06	Budget 06/07	Percent Change
51-10-0000	Regular Salaries	304,970	-	304,970	190,671	243,646	347,177	13.8%
51-10-0050	Health Insurance Makeup	22,800	-	22,800	9,299	12,000	19,800	(13.2%)
51-20-0200	Overtime	2,000	-	2,000	563	600	650	(67.5%)
51-30-0100	Retirement	102,435	-	102,435	65,824	80,000	124,461	21.5%
51-30-0300	Medicare	4,268	-	4,268	2,908	3,600	4,982	16.7%
51-30-0500	Group Insurance	82,540	-	82,540	65,103	81,919	102,387	24.0%
51-30-0520	Dental/Vision/Life/LTD	14,786	-	14,786	13,313	14,913	16,328	10.4%
51-30-1200	Workers' Comp Insurance	3,309	-	3,309	1,860	1,860	1,663	(49.7%)
51-30-1300	Unemployment Insurance	5,800	-	5,800	1,247	1,800	6,000	3.4%
51-30-2400	Employee Assistance Program	2,200	-	2,200	3,173	3,173	4,300	95.5%
<b>Subtotal Salaries &amp; Benefits</b>		<b>\$545,108</b>	-	<b>\$545,108</b>	<b>\$353,960</b>	<b>\$443,511</b>	<b>\$627,747</b>	<b>15.2%</b>
52-12-1000	Office Buildings & Grounds	13,500	-	13,500	12,548	13,500	12,036	(10.8%)
52-13-9020	Vehicle Maintenance	675	-	675	849	950	650	(3.7%)
52-13-9030	Safety Equipment	3,100	-	3,100	3,121	3,161	1,000	(67.7%)
52-13-9070	Janitorial	10,700	-	10,700	9,878	10,000	11,100	3.7%
52-13-9100	Small Tools	600	-	600	-	200	-	(100.0%)
52-17-0000	Office Expense (Supplies)	15,000	-	15,000	12,548	13,001	12,000	(20.0%)
52-17-0120	Ads and Notices	1,000	-	1,000	2,322	2,900	1,000	-
52-17-1200	Postage	6,380	-	6,380	8,629	8,750	3,500	(45.1%)
52-18-0210	Other Contracted Services	146,400	-	146,400	139,463	141,000	148,700	1.6%
52-18-0900	Contract Extra Help	7,000	-	7,000	3,885	3,885	3,200	(54.3%)
52-18-5540	Prof/Special Services	34,000	-	34,000	42,231	50,416	39,000	14.7%
52-20-0000	Rents & Leases	6,450	-	6,450	9,428	10,000	6,850	6.2%
52-23-4700	Special Programs	10,300	-	10,300	8,134	8,134	10,500	1.9%
52-25-0020	Continuing Education	600	-	600	600	600	600	-
52-25-0050	Memberships & Publications	400	-	400	523	645	1,250	212.5%
52-25-0060	Travel & Meetings	2,000	-	2,000	-	-	6,000	200.0%
52-26-0050	Utilities	18,522	-	18,522	14,911	15,000	15,310	(17.3%)
52-26-1500	Electricity	23,500	-	23,500	20,837	20,837	21,500	(8.5%)
<b>Subtotal Services &amp; Supplies</b>		<b>\$300,127</b>	-	<b>\$300,127</b>	<b>\$289,907</b>	<b>\$302,979</b>	<b>\$294,196</b>	<b>(2.0%)</b>
<b>Subtotal Other</b>		-	-	-	-	-	-	-
<b>TOTAL ALL EXPENDITURES</b>		<b>\$845,235</b>	-	<b>\$845,235</b>	<b>\$643,868</b>	<b>\$746,490</b>	<b>\$921,943</b>	<b>9.1%</b>

## Napa Sanitation District

SAFETY & TRAINING OFFICER/FLEET MAINTENANCE

## Budget Summary - 18

Account	Account Description	Budget 05/06	Adjustments	Adjusted FY 05/06	YTD 05/06	Estimated 05/06	Budget 06/07	Percent Change
51-10-0000	Regular Salaries	75,784	5,000	80,784	67,582	76,735	77,771	2.6%
51-20-0200	Overtime	1,000	-	1,000	-	-	-	(100.0%)
51-30-0100	Retirement	26,371	300	26,671	23,493	26,650	28,173	6.8%
51-30-0300	Medicare	1,099	20	1,119	980	1,113	1,128	2.6%
51-30-0500	Group Insurance	19,153	-	19,153	14,514	17,149	18,265	(4.6%)
51-30-0520	Dental/Vision/Life/LTD	3,629	-	3,629	3,437	3,653	3,638	0.3%
51-30-1200	Workers' Comp Insurance	4,181	-	4,181	2,351	2,351	6,041	44.5%
<b>Subtotal Salaries &amp; Benefits</b>		<b>\$131,217</b>	<b>\$5,320</b>	<b>\$136,537</b>	<b>\$112,356</b>	<b>\$127,651</b>	<b>\$135,016</b>	<b>2.9%</b>
52-13-9020	Vehicle Maintenance	500	-	500	358	500	500	-
52-13-9030	Safety Equipment	44,225	-	44,225	25,450	25,450	25,000	(43.5%)
52-13-9070	Janitorial	1,000	-	1,000	-	-	-	(100.0%)
52-13-9100	Small Tools	1,750	-	1,750	930	1,000	1,000	(42.9%)
52-16-8900	Rain Gear/Boots	240	-	240	-	-	200	(16.7%)
52-17-0000	Office Expense (Supplies)	2,850	-	2,850	1,638	1,638	1,700	(40.4%)
52-18-0210	Other Contracted Services	750	-	750	796	798	850	13.3%
52-18-5540	Prof/Special Services	7,500	-	7,500	6,736	7,500	7,500	-
52-23-6000	Fuel	750	-	750	612	612	670	(10.7%)
52-25-0020	Continuing Education	-	-	-	1,481	2,375	2,500	-
52-25-0050	Memberships & Publications	705	-	705	1,387	1,400	1,600	127.0%
52-25-0060	Travel & Meetings	4,000	-	4,000	1,481	2,375	3,000	(25.0%)
52-26-0050	Utilities	500	-	500	249	250	250	(50.0%)
<b>Subtotal Services &amp; Supplies</b>		<b>\$64,770</b>	<b>-</b>	<b>\$64,770</b>	<b>\$41,119</b>	<b>\$43,898</b>	<b>\$44,770</b>	<b>(30.9%)</b>
<b>Subtotal Other</b>		<b>-</b>	<b>-</b>	<b>-</b>	<b>-</b>	<b>-</b>	<b>-</b>	<b>-</b>
<b>TOTAL ALL EXPENDITURES</b>		<b>\$195,987</b>	<b>\$5,320</b>	<b>\$201,307</b>	<b>\$153,475</b>	<b>\$171,549</b>	<b>\$179,786</b>	<b>(8.3%)</b>

## Napa Sanitation District

## COLLECTION SYSTEM MAINTENANCE

## Budget Summary - 22

Account	Account Description	Budget 05/06	Adjustments	Adjusted FY 05/06	YTD 05/06	Estimated 05/06	Budget 06/07	Percent Change
51-10-0000	Regular Salaries	694,702	(1,000)	693,702	585,300	671,283	720,281	3.7%
51-10-0050	Health Insurance Makeup	63,461	(17,000)	46,461	33,569	38,584	44,156	(30.4%)
51-20-0200	Overtime	55,000	-	55,000	39,580	49,326	47,533	(13.6%)
51-30-0100	Retirement	241,116	-	241,116	205,322	232,670	260,270	7.9%
51-30-0300	Medicare	7,802	1,000	8,802	7,677	8,719	8,114	4.0%
51-30-0500	Group Insurance	138,660	-	138,660	115,661	135,442	149,040	7.5%
51-30-0520	Dental/Vision/Life/LTD	36,950	-	36,950	33,728	36,193	37,184	0.6%
51-30-1200	Workers' Comp Insurance	38,229	-	38,229	21,521	21,521	17,838	(53.3%)
51-30-2400	Employee Assistance Program	-	-	-	1,176	2,352	-	-
<b>Subtotal Salaries &amp; Benefits</b>		<b>\$1,275,920</b>	<b>(\$17,000)</b>	<b>\$1,258,920</b>	<b>\$1,043,534</b>	<b>\$1,196,090</b>	<b>\$1,284,416</b>	<b>0.7%</b>
52-12-1000	Office Buildings & Grounds	2,000	-	2,000	996	1,800	2,000	-
52-13-9020	Vehicle Maintenance	48,925	-	48,925	67,445	76,162	77,685	58.8%
52-13-9030	Safety Equipment	13,110	-	13,110	5,328	10,000	8,000	(39.0%)
52-13-9070	Janitorial	11,120	-	11,120	7,136	9,000	9,050	(18.6%)
52-13-9100	Small Tools	14,000	-	14,000	5,892	9,000	10,000	(28.6%)
52-13-9110	Backfill & Rock	25,750	-	25,750	11,213	12,000	11,450	(55.5%)
52-13-9140	Sewer Supplies	35,050	-	35,050	34,000	36,000	38,050	8.6%
52-16-8900	Rain Gear/Boots	8,162	-	8,162	4,600	4,600	6,000	(26.5%)
52-17-0000	Office Expense (Supplies)	4,225	-	4,225	4,764	4,800	4,300	1.8%
52-17-0120	Ads and Notices	250	-	250	-	-	-	(100.0%)
52-17-1200	Postage	500	-	500	303	400	500	-
52-18-0210	Other Contracted Services	14,750	(7,500)	7,250	3,567	7,120	4,850	(67.1%)
52-18-0900	Contract Extra Help	27,200	-	27,200	16,292	16,292	25,000	(8.1%)
52-18-0910	Maintenance Agreements	30,000	7,500	37,500	37,225	37,225	37,500	25.0%
52-20-0000	Rents & Leases	12,500	(12,000)	500	119	500	500	(96.0%)
52-23-6000	Fuel	30,125	-	30,125	28,382	34,289	43,011	42.8%
52-23-9100	Permits & Licenses	600	-	600	466	550	4,890	715.0%
52-23-9250	Chemicals	40,000	-	40,000	38,426	39,000	40,000	-
52-25-0050	Memberships & Publications	1,400	-	1,400	1,156	1,356	1,450	3.6%
52-25-0060	Travel & Meetings	8,450	-	8,450	3,671	5,000	5,500	(34.9%)
52-26-0050	Utilities	7,700	-	7,700	7,118	8,313	8,400	9.1%
<b>Subtotal Services &amp; Supplies</b>		<b>\$335,817</b>	<b>(\$12,000)</b>	<b>\$323,817</b>	<b>\$278,098</b>	<b>\$313,407</b>	<b>\$338,136</b>	<b>0.7%</b>
<b>Subtotal Other</b>		-	-	-	-	-	-	-
<b>TOTAL ALL EXPENDITURES</b>		<b>\$1,611,737</b>	<b>(\$29,000)</b>	<b>\$1,582,737</b>	<b>\$1,321,632</b>	<b>\$1,509,497</b>	<b>\$1,622,552</b>	<b>0.7%</b>

## Napa Sanitation District

## TREATMENT PLANT OPERATIONS

## Budget Summary - 52

Account	Account Description	Budget 05/06	Adjustments	Adjusted FY 05/06	YTD 05/06	Estimated 05/06	Budget 06/07	Percent Change
51-10-0000	Regular Salaries	649,621	(2,300)	647,321	607,214	633,682	695,655	7.1%
51-10-0050	Health Insurance Makeup	63,461	-	63,461	57,801	60,877	61,818	(2.6%)
51-20-0200	Overtime	75,000	-	75,000	46,895	48,000	50,000	(33.3%)
51-20-0600	Holiday Shift	6,650	-	6,650	3,749	4,500	4,500	(32.3%)
51-30-0100	Retirement	225,429	-	225,429	211,877	212,522	225,429	-
51-30-0300	Medicare	7,798	1,500	9,298	8,852	8,856	9,298	19.2%
51-30-0500	Group Insurance	105,218	100	105,318	92,740	104,397	94,000	(10.7%)
51-30-0520	Dental/Vision/Life/LTD	30,436	700	31,136	37,455	37,455	37,455	23.1%
51-30-1200	Workers' Comp Insurance	35,742	-	35,742	20,120	20,120	13,500	(62.2%)
51-30-2400	Employee Assistance Program	-	-	-	588	1,176	1,200	-
<b>Subtotal Salaries &amp; Benefits</b>		<b>\$1,199,355</b>	<b>-</b>	<b>\$1,199,355</b>	<b>\$1,087,291</b>	<b>\$1,131,585</b>	<b>\$1,192,855</b>	<b>(0.5%)</b>
52-13-9020	Vehicle Maintenance	13,000	-	13,000	12,171	12,268	13,000	-
52-13-9030	Safety Equipment	17,220	-	17,220	12,530	13,834	14,000	(18.7%)
52-13-9100	Small Tools	21,500	-	21,500	9,389	9,400	10,000	(53.5%)
52-13-9140	Sewer Supplies	21,350	-	21,350	16,617	17,500	17,500	(18.0%)
52-16-8900	Rain Gear/Boots	11,503	-	11,503	4,294	5,829	6,000	(47.8%)
52-17-0000	Office Expense (Supplies)	16,025	-	16,025	10,640	11,000	11,000	(31.4%)
52-17-1200	Postage	1,400	-	1,400	603	650	700	(50.0%)
52-18-0210	Other Contracted Services	52,250	-	52,250	32,424	44,250	44,250	(15.3%)
52-20-0000	Rents & Leases	5,000	-	5,000	7,249	7,890	8,000	60.0%
52-23-6000	Fuel	50,950	-	50,950	38,320	53,648	67,060	31.6%
52-23-9100	Permits & Licenses	141,724	-	141,724	78,471	95,000	100,000	(29.4%)
52-23-9250	Chemicals	510,500	105,000	615,500	509,481	539,032	677,967	32.8%
52-23-9530	Polymer	1,335,000	(195,000)	1,140,000	612,774	625,000	883,801	(33.8%)
52-25-0050	Memberships & Publications	1,700	-	1,700	865	1,226	1,300	(23.5%)
52-25-0060	Travel & Meetings	7,200	-	7,200	4,751	5,158	6,000	(16.7%)
52-26-0050	Utilities	113,200	-	113,200	84,542	93,571	100,000	(11.7%)
52-26-1500	Electricity	973,500	-	973,500	839,807	839,807	913,910	(6.1%)
<b>Subtotal Services &amp; Supplies</b>		<b>\$3,293,022</b>	<b>(\$90,000)</b>	<b>\$3,203,022</b>	<b>\$2,274,929</b>	<b>\$2,375,063</b>	<b>\$2,874,488</b>	<b>(12.7%)</b>
53-90-5030	West Napa Pump Station	500	-	500	190	280	300	(40.0%)
<b>Subtotal Other</b>		<b>\$500</b>	<b>-</b>	<b>\$500</b>	<b>\$190</b>	<b>\$280</b>	<b>\$300</b>	<b>(40.0%)</b>
<b>TOTAL ALL EXPENDITURES</b>		<b>\$4,492,877</b>	<b>(\$90,000)</b>	<b>\$4,402,877</b>	<b>\$3,362,409</b>	<b>\$3,506,928</b>	<b>\$4,067,644</b>	<b>(9.5%)</b>

## Napa Sanitation District

## TREATMENT PLANT MAINTENANCE

## Budget Summary - 54

Account	Account Description	Budget 05/06	Adjustments	Adjusted FY 05/06	YTD 05/06	Estimated 05/06	Budget 06/07	Percent Change
51-10-0000	Regular Salaries	261,180	(83,100)	178,080	170,985	170,831	178,080	(31.8%)
51-10-0050	Health Insurance Makeup	-	2,000	2,000	1,670	1,751	2,000	-
51-20-0200	Overtime	9,320	-	9,320	5,665	6,002	7,000	(24.9%)
51-20-0600	Holiday Shift	140	-	140	-	-	-	(100.0%)
51-30-0100	Retirement	90,259	(23,000)	67,259	59,485	61,916	70,728	(21.6%)
51-30-0300	Medicare	3,141	-	3,141	2,586	2,702	2,831	(9.9%)
51-30-0500	Group Insurance	80,630	(3,000)	77,630	65,416	78,596	77,512	(3.9%)
51-30-0520	Dental/Vision/Life/LTD	15,605	(2,500)	13,105	15,707	15,707	15,707	0.7%
51-30-1200	Workers' Comp Insurance	14,311	-	14,311	8,061	8,061	4,397	(69.3%)
<b>Subtotal Salaries &amp; Benefits</b>		<b>\$474,586</b>	<b>(\$109,600)</b>	<b>\$364,986</b>	<b>\$329,574</b>	<b>\$345,566</b>	<b>\$358,256</b>	<b>(24.5%)</b>
52-12-1000	Office Buildings & Grounds	44,500	-	44,500	35,974	37,775	54,000	21.3%
52-13-9020	Vehicle Maintenance	6,500	-	6,500	2,235	2,741	2,796	(57.0%)
52-13-9030	Safety Equipment	3,300	-	3,300	804	804	800	(75.8%)
52-13-9070	Janitorial	24,200	-	24,200	34,039	33,448	35,000	44.6%
52-13-9100	Small Tools	17,250	-	17,250	9,522	9,522	10,000	(42.0%)
52-13-9110	Backfill & Rock	14,200	-	14,200	4,256	4,643	5,000	(64.8%)
52-13-9140	Sewer Supplies	96,000	(7,000)	89,000	110,906	110,906	111,000	15.6%
52-16-8900	Rain Gear/Boots	4,483	-	4,483	1,501	1,788	1,501	(66.5%)
52-17-0000	Office Expense (Supplies)	3,225	-	3,225	606	661	700	(78.3%)
52-18-0210	Other Contracted Services	5,000	-	5,000	-	-	-	(100.0%)
52-18-0910	Maintenance Agreements	80,000	-	80,000	74,666	78,448	75,000	(6.3%)
52-20-0000	Rents & Leases	-	7,000	7,000	6,720	6,720	12,580	-
52-23-6000	Fuel	10,500	-	10,500	7,997	9,890	9,000	(14.3%)
52-23-9100	Permits & Licenses	200	-	200	158	271	200	-
52-23-9250	Chemicals	17,766	-	17,766	-	-	-	(100.0%)
52-25-0050	Memberships & Publications	125	-	125	-	-	125	-
52-25-0060	Travel & Meetings	1,600	-	1,600	299	780	500	(68.8%)
52-26-0050	Utilities	7,000	-	7,000	3,322	3,423	4,000	(42.9%)
<b>Subtotal Services &amp; Supplies</b>		<b>\$335,849</b>	<b>-</b>	<b>\$335,849</b>	<b>\$293,005</b>	<b>\$301,820</b>	<b>\$322,202</b>	<b>(4.1%)</b>
<b>Subtotal Other</b>		<b>-</b>	<b>-</b>	<b>-</b>	<b>-</b>	<b>-</b>	<b>-</b>	<b>-</b>
<b>TOTAL ALL EXPENDITURES</b>		<b>\$810,435</b>	<b>(\$109,600)</b>	<b>\$700,835</b>	<b>\$622,579</b>	<b>\$647,386</b>	<b>\$680,458</b>	<b>(16.0%)</b>

## Napa Sanitation District

## TREATMENT PLANT LABORATORY

## Budget Summary - 56

Account	Account Description	Budget 05/06	Adjustments	Adjusted FY 05/06	YTD 05/06	Estimated 05/06	Budget 06/07	Percent Change
51-10-0000	Regular Salaries	182,613	(29,800)	152,813	141,898	141,898	189,156	3.6%
51-10-0050	Health Insurance Makeup	30,390	(5,000)	25,390	22,499	22,499	33,362	9.8%
51-20-0200	Overtime	16,825	-	16,825	25,126	27,500	11,305	(32.8%)
51-20-0600	Holiday Shift	4,266	-	4,266	1,166	1,272	2,000	(53.1%)
51-30-0100	Retirement	62,919	(11,000)	51,919	49,684	49,813	51,000	(18.9%)
51-30-0200	Retirement/Vacation Payoff	-	-	-	372	405	500	-
51-30-0300	Medicare	2,622	400	3,022	2,785	2,785	2,800	6.8%
51-30-0500	Group Insurance	4,469	2,400	6,869	7,351	7,351	7,211	61.4%
51-30-0520	Dental/Vision/Life/LTD	7,684	-	7,684	5,914	6,245	9,298	21.0%
51-30-1200	Workers' Comp Insurance	9,976	-	9,976	5,620	5,620	2,869	(71.2%)
<b>Subtotal Salaries &amp; Benefits</b>		<b>\$321,764</b>	<b>(\$43,000)</b>	<b>\$278,764</b>	<b>\$262,416</b>	<b>\$265,388</b>	<b>\$309,500</b>	<b>(3.8%)</b>
52-13-9020	Vehicle Maintenance	1,000	-	1,000	499	500	1,000	-
52-13-9030	Safety Equipment	3,525	-	3,525	3,319	3,319	3,370	(4.4%)
52-13-9100	Small Tools	34,780	-	34,780	45,619	47,774	45,700	31.4%
52-16-8900	Rain Gear/Boots	1,160	-	1,160	2,405	2,405	1,685	45.3%
52-17-0000	Office Expense (Supplies)	4,680	-	4,680	3,006	3,006	3,100	(33.8%)
52-18-0900	Contract Extra Help	10,000	117,000	127,000	111,484	119,278	96,300	863.0%
52-18-0910	Maintenance Agreements	8,525	-	8,525	10,359	11,062	8,225	(3.5%)
52-18-3150	Outside Laboratory Analysis	97,740	-	97,740	51,092	51,092	75,404	(22.9%)
52-23-6000	Fuel	375	-	375	1,182	1,158	1,200	220.0%
52-23-9100	Permits & Licenses	6,900	-	6,900	4,105	4,105	5,000	(27.5%)
52-25-0050	Memberships & Publications	625	-	625	-	150	180	(71.2%)
52-25-0060	Travel & Meetings	200	-	200	1,150	1,150	450	125.0%
52-26-0050	Utilities	3,000	-	3,000	2,229	2,340	2,250	(25.0%)
<b>Subtotal Services &amp; Supplies</b>		<b>\$172,510</b>	<b>\$117,000</b>	<b>\$289,510</b>	<b>\$236,449</b>	<b>\$247,338</b>	<b>\$243,864</b>	<b>41.4%</b>
<b>Subtotal Other</b>		-	-	-	-	-	-	-
<b>TOTAL ALL EXPENDITURES</b>		<b>\$494,274</b>	<b>\$74,000</b>	<b>\$568,274</b>	<b>\$498,865</b>	<b>\$512,726</b>	<b>\$553,364</b>	<b>12.0%</b>

## Napa Sanitation District

## TECHNICAL SERVICES - ENGINEERING

## Budget Summary - 62

Account	Account Description	Budget 05/06	Adjustments	Adjusted FY 05/06	YTD 05/06	Estimated 05/06	Budget 06/07	Percent Change
51-10-0000	Regular Salaries	479,938	33,000	512,938	432,862	491,571	530,538	10.5%
51-10-0050	Health Insurance Makeup	31,283	13,000	44,283	37,826	44,251	53,968	72.5%
51-20-0200	Overtime	-	-	-	15,152	15,500	14,200	-
51-30-0100	Retirement	165,756	4,000	169,756	149,665	169,756	190,883	15.2%
51-30-0300	Medicare	5,540	1,300	6,840	5,942	6,770	6,441	16.3%
51-30-0500	Group Insurance	51,290	-	51,290	39,472	43,228	43,440	(15.3%)
51-30-0520	Dental/Vision/Life/LTD	16,997	1,000	17,997	15,741	17,686	18,670	9.8%
51-30-1200	Workers' Comp Insurance	10,081	-	10,081	5,677	5,677	3,163	(68.6%)
51-30-2400	Employee Assistance Program	-	-	-	464	500	1,800	-
<b>Subtotal Salaries &amp; Benefits</b>		<b>\$760,885</b>	<b>\$52,300</b>	<b>\$813,185</b>	<b>\$702,801</b>	<b>\$794,939</b>	<b>\$863,104</b>	<b>13.4%</b>
52-13-9020	Vehicle Maintenance	730	-	730	1,203	1,850	2,100	187.7%
52-13-9070	Janitorial	5,500	-	5,500	5,265	5,265	5,650	2.7%
52-13-9100	Small Tools	500	-	500	297	297	500	-
52-16-8900	Rain Gear/Boots	1,710	-	1,710	958	1,023	700	(59.1%)
52-17-0000	Office Expense (Supplies)	9,550	-	9,550	6,270	6,500	11,850	24.1%
52-17-0120	Ads and Notices	1,000	-	1,000	-	-	-	(100.0%)
52-18-0210	Other Contracted Services	1,400	-	1,400	831	831	850	(39.3%)
52-18-0900	Contract Extra Help	-	-	-	-	-	15,000	-
52-18-0910	Maintenance Agreements	-	3,600	3,600	3,600	3,600	850	-
52-18-5540	Prof/Special Services	-	-	-	-	864	5,000	-
52-20-0000	Rents & Leases	-	22,000	22,000	22,872	24,600	21,800	-
52-23-6000	Fuel	3,500	-	3,500	3,581	4,100	4,100	17.1%
52-23-9100	Permits & Licenses	300	-	300	403	728	-	(100.0%)
52-25-0050	Memberships & Publications	-	-	-	-	153	635	-
52-25-0060	Travel & Meetings	1,600	-	1,600	977	1,600	5,325	232.8%
52-26-0050	Utilities	4,450	-	4,450	3,029	3,430	3,460	(22.2%)
<b>Subtotal Services &amp; Supplies</b>		<b>\$30,240</b>	<b>\$25,600</b>	<b>\$55,840</b>	<b>\$49,286</b>	<b>\$54,841</b>	<b>\$77,820</b>	<b>157.3%</b>
<b>Subtotal Other</b>		-	-	-	-	-	-	-
<b>TOTAL ALL EXPENDITURES</b>		<b>\$791,125</b>	<b>\$77,900</b>	<b>\$869,025</b>	<b>\$752,087</b>	<b>\$849,780</b>	<b>\$940,924</b>	<b>18.9%</b>

## Napa Sanitation District

## TECHNICAL SERVICES - POLLUTION PREVENTION

## Budget Summary - 64

Account	Account Description	Budget 05/06	Adjustments	Adjusted FY 05/06	YTD 05/06	Estimated 05/06	Budget 06/07	Percent Change
51-10-0000	Regular Salaries	111,808	(22,300)	89,508	72,421	81,725	86,674	(22.5%)
51-10-0050	Health Insurance Makeup	1,793	-	1,793	1,509	1,751	2,034	13.4%
51-30-0100	Retirement	38,907	(10,300)	28,607	25,006	28,369	31,398	(19.3%)
51-30-0300	Medicare	198	(20)	178	-	-	-	(100.0%)
51-30-0500	Group Insurance	15,637	(5,000)	10,637	8,584	9,786	10,723	(31.4%)
51-30-0520	Dental/Vision/Life/LTD	4,389	(1,000)	3,389	2,225	2,619	2,630	(40.1%)
51-30-1200	Workers' Comp Insurance	6,169	-	6,169	3,474	3,474	2,152	(65.1%)
<b>Subtotal Salaries &amp; Benefits</b>		<b>\$178,901</b>	<b>(\$38,620)</b>	<b>\$140,281</b>	<b>\$113,218</b>	<b>\$127,723</b>	<b>\$135,609</b>	<b>(24.2%)</b>
52-13-9100	Small Tools	100	-	100	327	327	375	275.0%
52-13-9140	Sewer Supplies	-	-	-	-	-	19,000	-
52-16-8900	Rain Gear/Boots	1,288	-	1,288	156	156	650	(49.5%)
52-17-0000	Office Expense (Supplies)	3,255	-	3,255	736	736	1,500	(53.9%)
52-17-0120	Ads and Notices	600	-	600	-	-	300	(50.0%)
52-18-3150	Outside Laboratory Analysis	40,000	(19,230)	20,770	6,388	7,000	11,200	(72.0%)
52-18-5540	Prof/Special Services	57,756	(33,000)	24,756	24,063	25,000	25,600	(55.7%)
52-23-4700	Special Programs	10,000	-	10,000	10,849	11,000	10,000	-
52-23-9100	Permits & Licenses	169	-	169	259	259	126	(25.2%)
52-25-0050	Memberships & Publications	3,640	-	3,640	1,740	1,740	3,360	(7.7%)
52-25-0060	Travel & Meetings	3,600	-	3,600	316	316	3,400	(5.6%)
<b>Subtotal Services &amp; Supplies</b>		<b>\$120,408</b>	<b>(\$52,230)</b>	<b>\$68,178</b>	<b>\$44,834</b>	<b>\$46,534</b>	<b>\$75,511</b>	<b>(37.3%)</b>
<b>Subtotal Other</b>		-	-	-	-	-	-	-
<b>TOTAL ALL EXPENDITURES</b>		<b>\$299,309</b>	<b>(\$90,850)</b>	<b>\$208,459</b>	<b>\$158,051</b>	<b>\$174,257</b>	<b>\$211,120</b>	<b>(29.5%)</b>

## Napa Sanitation District

## WATER &amp; BIOSOLIDS RECLAMATION

## Budget Summary - 72

Account	Account Description	Budget 05/06	Adjustments	Adjusted FY 05/06	YTD 05/06	Estimated 05/06	Budget 06/07	Percent Change
51-10-0000	Regular Salaries	181,498	73,000	254,498	213,994	242,462	272,903	50.4%
51-10-0050	Health Insurance Makeup	10,887	-	10,887	5,818	6,753	7,850	(27.9%)
51-20-0200	Overtime	23,000	-	23,000	27,705	31,442	33,103	43.9%
51-20-0600	Holiday Shift	-	-	-	1,301	2,100	2,530	-
51-30-0100	Retirement	62,531	23,000	85,531	74,916	84,581	98,207	57.1%
51-30-0300	Medicare	1,986	2,100	4,086	3,614	4,036	3,931	97.9%
51-30-0500	Group Insurance	27,690	23,000	50,690	44,343	50,894	55,931	102.0%
51-30-0520	Dental/Vision/Life/LTD	12,765	2,500	15,265	12,759	15,371	15,382	20.5%
51-30-1200	Workers' Comp Insurance	19,829	-	19,829	11,166	11,166	6,731	(66.1%)
51-30-2400	Employee Assistance Program	-	-	-	-	-	500	-
<b>Subtotal Salaries &amp; Benefits</b>		<b>\$340,186</b>	<b>\$123,600</b>	<b>\$463,786</b>	<b>\$395,616</b>	<b>\$448,806</b>	<b>\$497,068</b>	<b>46.1%</b>
52-12-1000	Office Buildings & Grounds	6,000	(4,000)	2,000	1,499	1,500	2,000	(66.7%)
52-13-9020	Vehicle Maintenance	10,000	(2,000)	8,000	6,529	8,055	8,217	(17.8%)
52-13-9030	Safety Equipment	1,900	(1,000)	900	766	1,500	1,000	(47.4%)
52-13-9100	Small Tools	4,500	2,200	6,700	5,302	5,500	5,500	22.2%
52-13-9110	Backfill & Rock	2,500	470	2,970	2,972	3,000	2,000	(20.0%)
52-13-9140	Sewer Supplies	6,200	27,000	33,200	29,309	31,000	42,700	588.7%
52-16-8900	Rain Gear/Boots	2,996	(1,000)	1,996	1,737	2,500	2,500	(16.6%)
52-17-0000	Office Expense (Supplies)	-	-	-	-	-	300	-
52-18-0900	Contract Extra Help	12,800	-	12,800	3,127	11,760	13,440	5.0%
52-18-0910	Maintenance Agreements	300	260	560	515	515	500	66.7%
52-18-5540	Prof/Special Services	20,400	-	20,400	2,200	20,400	15,200	(25.5%)
52-20-0000	Rents & Leases	44,432	11,150	55,582	22,704	54,954	18,800	(57.7%)
52-23-6000	Fuel	12,125	11,850	23,975	14,587	19,856	22,600	86.4%
52-23-9100	Permits & Licenses	450	-	450	252	497	509	13.1%
52-23-9250	Chemicals	11,928	5,700	17,628	11,811	20,600	12,200	2.3%
52-25-0050	Memberships & Publications	675	-	675	288	435	690	2.2%
52-25-0060	Travel & Meetings	1,050	-	1,050	275	1,613	1,540	46.7%
52-26-0050	Utilities	4,600	(2,000)	2,600	4,096	3,377	3,300	(28.3%)
52-26-1500	Electricity	7,500	-	7,500	6,149	7,000	7,200	(4.0%)
<b>Subtotal Services &amp; Supplies</b>		<b>\$150,356</b>	<b>\$48,630</b>	<b>\$198,986</b>	<b>\$114,118</b>	<b>\$194,062</b>	<b>\$160,196</b>	<b>6.5%</b>
53-47-1700	Somky Mortgage	86,750	-	86,750	79,841	86,750	86,750	-
53-47-1800	C.O.P. - US Trust	2,210,850	-	2,210,850	2,210,850	2,210,850	2,211,000	0.0%
53-90-5010	Somky Property	10,000	-	10,000	10,405	10,405	10,809	8.1%
53-90-5020	Jamieson Canyon Property	18,100	-	18,100	19,623	19,623	20,996	16.0%
<b>Subtotal Other</b>		<b>\$2,325,700</b>	<b>-</b>	<b>\$2,325,700</b>	<b>\$2,320,719</b>	<b>\$2,327,628</b>	<b>\$2,329,555</b>	<b>0.2%</b>
<b>TOTAL ALL EXPENDITURES</b>		<b>\$2,816,242</b>	<b>\$172,230</b>	<b>\$2,988,472</b>	<b>\$2,830,453</b>	<b>\$2,970,496</b>	<b>\$2,986,819</b>	<b>6.1%</b>

## Capital Projects - Summary

<b>Proposed</b>								
<b>Escalation = 3.0%/year</b>		<b>FY 05/06</b>	<b>FY 05/06</b>	<b>FY 06/07</b>	<b>FY 07/08</b>	<b>FY 08/09</b>	<b>FY 09/10</b>	<b>FY 10/11</b>
		<b>Budget</b>	<b>Year-End</b>					
<b>Current Users</b>								
Collections		2,415,228	2,354,320	<b>4,838,974</b>	1,812,306	1,433,342	1,742,408	2,381,290
Treatment Plant		1,071,970	1,013,263	<b>4,247,004</b>	2,412,492	2,651,904	2,528,664	1,677,424
Recycling		50,000	50,000	<b>343,400</b>	-	-	-	64,000
Other		135,900	135,900	<b>380,500</b>	307,200	315,200	322,200	330,200
<b>Subtotal Current Users</b>		<b>\$3,673,098</b>	<b>\$3,553,483</b>	<b>\$9,809,878</b>	<b>\$4,531,998</b>	<b>\$4,400,446</b>	<b>\$4,593,272</b>	<b>\$4,452,914</b>
<b>Future Users</b>								
Collections		1,528,103	1,403,748	<b>2,828,526</b>	768,694	534,658	696,592	1,266,710
Treatment Plant		507,194	328,802	<b>2,952,996</b>	741,508	1,609,096	1,593,336	986,576
Recycling		1,193,850	420,331	<b>2,013,200</b>	927,900	1,425,150	629,100	628,750
Other		89,100	89,100	<b>19,700</b>	-	-	-	-
<b>Subtotal Future Users</b>		<b>\$3,318,247</b>	<b>\$2,241,981</b>	<b>\$7,814,422</b>	<b>\$2,438,102</b>	<b>\$3,568,904</b>	<b>\$2,919,028</b>	<b>\$2,882,036</b>
<b>Total Program</b>								
Collections		3,943,331	3,758,068	<b>7,667,500</b>	2,581,000	1,968,000	2,439,000	3,648,000
Treatment Plant		1,579,164	1,342,065	<b>7,200,000</b>	3,154,000	4,261,000	4,122,000	2,664,000
Recycling		1,243,850	470,331	<b>2,356,600</b>	927,900	1,425,150	629,100	692,750
Other		225,000	225,000	<b>400,200</b>	307,200	315,200	322,200	330,200
<b>Total</b>		<b>\$6,991,345</b>	<b>\$5,795,464</b>	<b>\$17,624,300</b>	<b>\$6,970,100</b>	<b>\$7,969,350</b>	<b>\$7,512,300</b>	<b>\$7,334,950</b>

## Capital Projects - Summary

<b>Proposed</b>							
<b>Escalation = 3.0%/year</b>							
	<b>FY 11/12</b>	<b>FY 12/13</b>	<b>FY 13/14</b>	<b>FY 14/15</b>	<b>FY 15/16</b>	<b>10-YEAR TOTAL</b>	
<b>Current Users</b>							
Collections	3,334,022	3,135,738	3,667,924	2,907,422	-	25,253,426	
Treatment Plant	2,301,358	487,588	463,332	614,568	307,268	17,691,602	
Recycling	-	-	31,000	-	85,000	523,400	
Other	338,200	347,200	355,200	364,200	373,200	3,433,300	
<b>Subtotal Current Users</b>	<b>\$5,973,580</b>	<b>\$3,970,526</b>	<b>\$4,517,456</b>	<b>\$3,886,190</b>	<b>\$765,468</b>	<b>\$46,901,728</b>	
<b>Future Users</b>							
Collections	1,826,978	1,703,262	2,070,076	1,590,578	2,579,124	15,865,198	
Treatment Plant	1,415,642	117,412	205,668	247,432	30,732	9,900,398	
Recycling	715,100	627,150	630,900	629,200	632,200	8,858,650	
Other	-	-	-	-	-	19,700	
<b>Subtotal Future Users</b>	<b>\$3,957,720</b>	<b>\$2,447,824</b>	<b>\$2,906,644</b>	<b>\$2,467,210</b>	<b>\$3,242,056</b>	<b>\$34,643,946</b>	
<b>Total Program</b>							
Collections	5,161,000	4,839,000	5,738,000	4,498,000	2,579,124	41,118,624	
Treatment Plant	3,717,000	605,000	669,000	862,000	338,000	27,592,000	
Recycling	715,100	627,150	661,900	629,200	717,200	9,382,050	
Other	338,200	347,200	355,200	364,200	373,200	3,453,000	
<b>Total</b>	<b>\$9,931,300</b>	<b>\$6,418,350</b>	<b>\$7,424,100</b>	<b>\$6,353,400</b>	<b>\$4,007,524</b>	<b>\$81,545,674</b>	

**Capital Projects - COLLECTION**

ID	Escalation = 3.0%/year	Urgency	Type	% Current	FY 06/07	FY 07/08	FY 08/09	FY 09/10
						1	2	3
		Full Program	Major					
		Proposed	Minor					
		Critical	Annual					
1170	Annual Cleanouts Installation/Repair	Critical	Annual	100.0%	90,000	93,000	95,000	98,000
1242	Annual Lateral Replacement & Repairs	Critical	Annual	100.0%	50,000	52,000	53,000	55,000
1166	Annual Manhole Raising or Repairing	Critical	Annual	100.0%	25,000	26,000	27,000	28,000
1243	Main Line Sewer Repairs	Critical	Annual	100.0%	150,000	155,000	159,000	164,000
1622	Granite XP Upgrade Project	Critical	Major		-	-	-	-
1056	I/I Projects	Critical	Major	60.6%	-	-	-	-
1412	North Napa Siphon Project	Critical	Major	60.6%	5,150,000	-	-	-
1624	E Spring St Sewer Phase 1 - Rehab	Proposed	Major	60.6%	1,165,000	-	-	-
1120	Silverado Trail Gravity Sewer	Critical	Major	60.6%	584,000	-	-	-
1618	Collection System Master Plan	Critical	Major	60.6%	140,000	-	-	-
	I&I Flow Measurement Program	Proposed	Major	60.6%	140,000	-	-	-
	CMMS Upgrade (Hansen Version 7)	Proposed	Major	100.0%	82,000	-	-	-
1157	GIS Mapping	Critical	Major	100.0%	35,000	-	-	-
	E Spring St Sewer Phase 2 - Replacement	Proposed	Major	60.6%	-	1,418,000	-	-
	A St/I St/Cedar St	Critical	Major	60.6%	-	533,000	-	-
	Siphons Condition Assessment & Possible Rehab	Proposed	Major	100.0%	-	82,000	-	-
	Trailer Mounted Vector	Full Program	Major	60.6%	-	77,000	-	-
	W Park Av - Lower Section	Proposed	Major	60.6%	-	-	684,000	-
	Stonecrest Area	Proposed	Major	60.6%	-	-	673,000	-
	Alphabet Streets - Lower Section	Proposed	Major	60.6%	-	-	-	1,768,000
	Master Plan Sewer Projects	Full Program	Major	60.6%	-	-	-	1,093,000
	Alphabet Streets - Upper Section	Proposed	Major	60.6%	-	-	-	-
	Browns Valley Rd & First St	Proposed	Major	60.6%	-	-	-	-
	Greebach St	Proposed	Major	60.6%	-	-	-	-
	York St	Proposed	Major	60.6%	-	-	-	-
	North Napa 18" ACP (Trower to Garfield Ln)	Proposed	Major	60.6%	-	-	-	-
	North Napa 18" ACP (El Centro to Trower)	Proposed	Major	60.6%	-	-	-	-
	Soscol Ave 14" ACP (Trancas to La Homa)	Proposed	Major	60.6%	-	-	-	-
	Alphabet Streets - Top Section	Proposed	Major	60.6%	-	-	-	-
	Park Street - Upper Section	Proposed	Major	60.6%	-	-	-	-
	Silverado Trail (Evens through easement to Juarez)	Proposed	Major	60.6%	-	-	-	-
	Redwood Rd (Carol Dr to Linda Vista)	Proposed	Major	60.6%	-	-	-	-
	Glenwood & Muller	Proposed	Major	60.6%	-	-	-	-

Capital Projects - COLLECTION

ID	Escalation = 3.0%/year	Urgency	Type	% Current	FY 06/07	FY 07/08	FY 08/09	FY 09/10
						1	2	3
		Full Program	Major					
		Proposed	Minor					
		Critical	Annual					
	Foothill Area	Proposed	Major	60.6%	-	-	-	-
	Soscol Ave (8th St to Oil Company Rd)	Proposed	Major	60.6%	-	-	-	-
	Post St (from Silverado Tr to Juarez)	Proposed	Major	60.6%	-	-	-	-
	Trunk Line 66" RCP (Imola Av to WWTP)	Proposed	Major	60.6%	-	-	-	-
	Trancas St (Jefferson to Valley Verde)	Proposed	Major	60.6%	-	-	-	-
1617	Equipment Replacement Project	Critical	Minor	100.0%	-	-	-	-
	Trailers and Storage containers	Critical	Minor	100%	50,000	-	-	-
	Electric Eel (Replace)	Proposed	Minor	100%	4,000	-	4,000	-
	Pipe Locator (Replacement)	Critical	Minor	100%	2,500	-	-	-
	CCTV Truck Replacement	Proposed	Minor	100%	-	180,000	-	-
	Vehicle Replacements	Proposed	Minor	100%	-	42,000	273,000	326,000
<b>TOTAL ANNUAL EXPENDITURES (rounded)</b>					<b>\$7,667,500</b>	<b>\$2,658,000</b>	<b>\$1,968,000</b>	<b>\$3,532,000</b>

## Capital Projects - COLLECTION

ID	Escalation = 3.0%/year	Urgency	Type	% Current	FY 06/07	FY 07/08	FY 08/09	FY 09/10
						1	2	3
		Full Program	Major					
		Proposed	Minor					
		Critical	Annual					
<b>Subtotal Major Projects for Proposed</b>					<b>\$7,611,000</b>	<b>\$2,359,000</b>	<b>\$1,691,000</b>	<b>\$2,113,000</b>
Subtotal Major Projects "Critical"					6,224,000	859,000	334,000	345,000
Subtotal Major Projects "Proposed"					1,387,000	1,500,000	1,357,000	1,768,000
Subtotal Major Projects "Full Program"					-	77,000	-	1,093,000
Major Projects w/ "Critical" & "Proposed"					7,611,000	2,359,000	1,691,000	2,113,000
Total Major Projects All Urgency Classes					7,611,000	2,436,000	1,691,000	3,206,000
Minor					56,500	222,000	277,000	326,000
<b>Current Users (Fund 7830)</b>								
Proposed					4,782,474	1,590,306	1,156,342	1,416,408
Minor					56,500	222,000	277,000	326,000
<b>Subtotal Current Users - Collection Projects</b>					<b>4,838,974</b>	<b>1,812,306</b>	<b>1,433,342</b>	<b>1,742,408</b>
<b>Future Users (Fund 7810)</b>								
Proposed					2,828,526	768,694	534,658	696,592
Minor					-	-	-	-
<b>Subtotal Future Users - Collection Projects</b>					<b>2,828,526</b>	<b>768,694</b>	<b>534,658</b>	<b>696,592</b>
<b>All Users</b>								
Proposed					7,611,000	2,359,000	1,691,000	2,113,000
Minor					56,500	222,000	277,000	326,000
<b>Total: Collection Projects</b>					<b>7,667,500</b>	<b>2,581,000</b>	<b>1,968,000</b>	<b>2,439,000</b>

## Capital Projects - COLLECTION

ID	Escalation = 3.0%/year	FY 10/11	FY 11/12	FY 12/13	FY 13/14	FY 14/15	FY 15/16	10-YEAR TOTAL
		4	5	6	7	8	9	
1170	Annual Cleanouts Installation/Repair	101,000	104,000	107,000	111,000	114,000	117,000	1,030,000
1242	Annual Lateral Replacement & Repairs	56,000	58,000	60,000	61,000	63,000	65,000	573,000
1166	Annual Manhole Raising or Repairing	29,000	30,000	30,000	31,000	32,000	33,000	291,000
1243	Main Line Sewer Repairs	169,000	174,000	179,000	184,000	190,000	196,000	1,720,000
1622	Granite XP Upgrade Project	-	-	-	-	-	-	-
1056	I/I Projects	-	-	-	-	-	-	-
1412	North Napa Siphon Project	-	-	-	-	-	-	5,150,000
1624	E Spring St Sewer Phase 1 - Rehab	-	-	-	-	-	-	1,165,000
1120	Silverado Trail Gravity Sewer	-	-	-	-	-	-	584,000
1618	Collection System Master Plan	-	-	-	-	-	-	140,000
	I&I Flow Measurement Program	-	-	-	-	-	-	140,000
	CMMS Upgrade (Hansen Version 7)	-	-	-	-	-	-	82,000
1157	GIS Mapping	-	-	-	-	-	-	35,000
	E Spring St Sewer Phase 2 - Replacement	-	-	-	-	-	-	1,418,000
	A St/I St/Cedar St	-	-	-	-	-	-	533,000
	Siphons Condition Assessment & Possible Rehab	-	-	-	-	-	-	82,000
	Trailer Mounted Vector	-	-	-	-	-	-	77,000
	W Park Av - Lower Section	-	-	-	-	-	-	684,000
	Stonecrest Area	-	-	-	-	-	-	673,000
	Alphabet Streets - Lower Section	-	-	-	-	-	-	1,768,000
	Master Plan Sewer Projects	1,126,000	1,159,000	1,194,000	1,230,000	1,267,000	1,305,000	8,374,000
	Alphabet Streets - Upper Section	1,774,000	-	-	-	-	-	1,774,000
	Browns Valley Rd & First St	1,362,000	2,898,000	2,985,000	-	-	-	7,245,000
	Greebach St	79,000	-	-	-	-	-	79,000
	York St	-	770,000	-	-	-	-	770,000
	North Napa 18" ACP (Trower to Garfield Ln)	-	527,000	-	-	-	-	527,000
	North Napa 18" ACP (El Centro to Trower)	-	221,000	-	-	-	-	221,000
	Soscol Ave 14" ACP (Trancas to La Homa)	-	221,000	-	-	-	-	221,000
	Alphabet Streets - Top Section	-	-	591,000	-	-	-	591,000
	Park Street - Upper Section	-	-	419,000	-	-	-	419,000
	Silverado Trail (Evens through easement to Juarez)	-	-	328,000	-	-	-	328,000
	Redwood Rd (Carol Dr to Linda Vista)	-	-	-	4,425,000	-	-	4,425,000
	Gleenwood & Muller	-	-	-	829,000	-	-	829,000

Capital Projects - COLLECTION

ID	Escalation = 3.0%/year	FY 10/11	FY 11/12	FY 12/13	FY 13/14	FY 14/15	FY 15/16	10-YEAR TOTAL
		4	5	6	7	8	9	
	Foothill Area	-	-	-	-	2,143,000	-	2,143,000
	Soscol Ave (8th St to Oil Company Rd)	-	-	-	-	1,781,000	-	1,781,000
	Post St (from Silverado Tr to Juarez)	-	-	-	-	113,000	-	113,000
	Trunk Line 66" RCP (Imola Av to WWTP)	-	-	-	-	-	5,417,000	5,417,000
	Trancas St (Jefferson to Valley Verde)	-	-	-	-	-	1,129,000	1,129,000
1617	Equipment Replacement Project	-	-	-	-	-	-	-
	Trailers and Storage containers	-	-	-	-	-	-	50,000
	Electric Eel (Replace)	-	-	-	-	-	5,000	13,000
	Pipe Locator (Replacement)	-	-	-	-	-	-	2,500
	CCTV Truck Replacement	-	-	-	-	-	-	180,000
	Vehicle Replacements	78,000	158,000	140,000	97,000	62,000	-	1,176,000
								-
	<b>TOTAL ANNUAL EXPENDITURES (rounded)</b>	<b>\$4,774,000</b>	<b>\$6,320,000</b>	<b>\$6,033,000</b>	<b>\$6,968,000</b>	<b>\$5,765,000</b>	<b>\$8,267,000</b>	<b>53,952,500</b>

## Capital Projects - COLLECTION

ID	Escalation = 3.0%/year	FY 10/11	FY 11/12	FY 12/13	FY 13/14	FY 14/15	FY 15/16	10-YEAR TOTAL
		4	5	6	7	8	9	
	<b>Subtotal Major Projects for</b>	<b>\$3,570,000</b>	<b>\$5,003,000</b>	<b>\$4,699,000</b>	<b>\$5,641,000</b>	<b>\$4,436,000</b>	<b>\$6,957,000</b>	<b>\$44,080,000</b>
	Subtotal Major Projects "Critical"	355,000	366,000	376,000	387,000	399,000	411,000	10,056,000
	Subtotal Major Projects "Proposed"	3,215,000	4,637,000	4,323,000	5,254,000	4,037,000	6,546,000	34,024,000
	Subtotal Major Projects "Full Program"	1,126,000	1,159,000	1,194,000	1,230,000	1,267,000	1,305,000	8,451,000
	Major Projects w/ "Critical" & "Proposed"	3,570,000	5,003,000	4,699,000	5,641,000	4,436,000	6,957,000	44,080,000
	Total Major Projects All Urgency Classes	4,696,000	6,162,000	5,893,000	6,871,000	5,703,000	8,262,000	52,531,000
Minor		78,000	158,000	140,000	97,000	62,000	5,000	1,421,500
	<b>Current Users (Fund 7830)</b>							
	Proposed	2,303,290	3,176,022	2,995,738	3,570,924	2,845,422	4,377,876	28,214,802
	Minor	78,000	158,000	140,000	97,000	62,000	5,000	1,421,500
	<b>Subtotal Current Users - Collection Projects</b>	<b>2,381,290</b>	<b>3,334,022</b>	<b>3,135,738</b>	<b>3,667,924</b>	<b>2,907,422</b>	<b>-</b>	<b>25,253,426</b>
	<b>Future Users (Fund 7810)</b>							
	Proposed	1,266,710	1,826,978	1,703,262	2,070,076	1,590,578	2,579,124	15,865,198
	Minor	-	-	-	-	-	-	-
	<b>Subtotal Future Users - Collection Projects</b>	<b>1,266,710</b>	<b>1,826,978</b>	<b>1,703,262</b>	<b>2,070,076</b>	<b>1,590,578</b>	<b>2,579,124</b>	<b>15,865,198</b>
	<b>All Users</b>							
	Proposed	3,570,000	5,003,000	4,699,000	5,641,000	4,436,000	6,957,000	44,080,000
	Minor	78,000	158,000	140,000	97,000	62,000	5,000	1,421,500
	<b>Total: Collection Projects</b>	<b>3,648,000</b>	<b>5,161,000</b>	<b>4,839,000</b>	<b>5,738,000</b>	<b>4,498,000</b>	<b>6,962,000</b>	<b>45,501,500</b>

## Capital Projects - TREATMENT

ID	Escalation = 3.0%/year	Urgency	Type	% Current	FY 06/07	FY 07/08	FY 08/09	FY09/10
		Full Program Proposed Critical	Major Minor Annual			1	2	3
	Other Projects	Critical	Major	60.6%	-	-	-	-
1627	Pond Embankment Repair	Critical	Major	100.0%	-	-	-	-
1619	PLC Replacement Project	Critical	Major	100.0%	-	-	-	-
1606	Bioassay System	Critical	Major	100.0%	-	-	-	-
1621	IPS Pump Repair Project	Critical	Major	100.0%	-	-	-	-
1175	Misc. Plant Upgrades	Critical	Major	60.6%	-	-	-	-
1530	Plant Ventilation System Improvements	Critical	Major	100.0%	-	-	-	-
1613	Emergency Radios	Critical	Major	100.0%	-	-	-	-
1512	"As-built" Record Drawings Phase II	Critical	Major	60.6%	-	-	-	-
1318	Upgrade West Napa PS	Critical	Major	100.0%	-	-	-	-
1121	Pond Transfer Structures - Rehab	Critical	Major	100.0%	-	206,000	-	-
1122	Stonecrest PS Replacement & Force Main	Critical	Major	60.6%	2,350,000	-	-	-
1533	RW Reservoir Cover & Capacity Increase	Proposed	Major	0.0%	1,600,000	-	-	-
1620	Pond 1 Biosolids Removal	Critical	Major	100.0%	1,000,000	-	-	-
	Somky Ranch Biosolids Project	Critical	Major	100.0%	500,000	515,000	-	-
1154	Telemetry Upgrade - Phase II	Critical	Major	60.6%	346,000	-	-	-
1524	Replace Admin Building Roof	Critical	Major	100.0%	210,000	-	-	-
	WWTP Master Plan	Proposed	Major	60.6%	200,000	-	-	-
	SCADA PLC Conversion	Critical	Major	60.6%	160,000	-	-	-
	Influent PS Repair	Critical	Major	100.0%	150,000	103,000	-	-
1148	RWQCB Mandated Programs	Critical	Major	60.6%	113,000	-	-	-
	W Napa PS Pump 2 Replacement	Critical	Major	100.0%	100,000	-	-	-
1523	Cogen Modification Study and Conversion	Proposed	Major	60.6%	75,000	-	-	-
	SCADA Master Plan Implementation	Proposed	Major	60.6%	50,000	52,000	53,000	-
	Influent PS Seismic Study	Critical	Major	60.6%	50,000	-	-	-
	River Park PS Generator Replacement	Proposed	Major	60.6%	35,000	-	-	-
	WWTP Service Water Filtration	Critical	Major	60.6%	30,000	-	-	-
	Jameson Canyon Pressure Station	Critical	Major	100.0%	25,000	26,000	-	-
	W Napa PS Ventilation	Critical	Major	60.6%	25,000	-	-	-
	North Napa PS Demolition	Critical	Major	60.6%	-	309,000	-	-
	Grease Receiving Station	Proposed	Major	60.6%	-	258,000	-	-
	Secondary Clarifier Sluice Gates	Proposed	Major	60.6%	-	258,000	-	-
	SCADA Upgrades	Proposed	Major	60.6%	-	206,000	-	-
	Vactor Dump Site	Proposed	Major	60.6%	-	206,000	-	-



## Capital Projects - TREATMENT

ID	Escalation = 3.0%/year	Urgency	Type	% Current	FY 06/07	FY 07/08	FY 08/09	FY09/10
		Full Program Proposed Critical	Major Minor Annual			1	2	3
		Full Program	Major	60.6%	-	-	-	-
		Full Program	Major	60.6%	-	-	-	-
		Full Program	Major	60.6%	-	-	-	-
		Full Program	Major	60.6%	-	-	-	-
		Full Program	Major	100.0%	-	-	-	-
		Full Program	Major	100.0%	-	-	-	-
		Full Program	Major	60.6%	-	-	-	-
		Full Program	Major	60.6%	-	-	-	-
		Full Program	Major	100.0%	-	-	-	-
		Full Program	Major	60.6%	-	-	-	-
		Full Program	Major	60.6%	-	-	-	-
		Full Program	Major	60.6%	-	-	-	-
		Full Program	Major	60.6%	-	-	-	-
		Proposed	Minor	100.0%	60,000	31,000	-	-
		Critical	Minor	100.0%	24,000	-	-	-
		Proposed	Minor	100.0%	20,000	21,000	21,000	-
		Critical	Minor	100.0%	20,000	-	-	-
		Proposed	Minor	100.0%	20,000	-	-	-
		Proposed	Minor	100.0%	15,000	-	-	-
		Proposed	Minor	100.0%	8,000	-	-	4,000
		Critical	Minor	100.0%	6,000	-	6,000	-
		Critical	Minor	100.0%	5,000	5,000	-	-
		Critical	Minor	100.0%	3,000	-	-	-
		Proposed	Minor	100.0%	-	21,000	-	-
		Proposed	Minor	100.0%	-	15,000	-	-
		Proposed	Minor	100.0%	-	10,000	-	-
		Proposed	Minor	100.0%	-	10,000	-	-
		Proposed	Minor	100.0%	-	8,000	-	3,000
		Critical	Minor	100.0%	-	7,000	-	-
		Proposed	Minor	100.0%	-	-	27,000	-
		Proposed	Minor	100.0%	-	-	8,000	-
		Proposed	Minor	100.0%	-	-	-	38,000
		Proposed	Minor	100.0%	-	-	-	-

**Capital Projects - TREATMENT**

ID	Escalation = 3.0%/year	Urgency	Type	% Current	FY 06/07	FY 07/08	FY 08/09	FY09/10
		Full Program Proposed Critical	Major Minor Annual			1	2	3
	Digester Hot Water Pumps (3)	Proposed	Minor	100.0%	-	-	-	-
	DAFT Recirc Pumps (2) Gould	Proposed	Minor	100.0%	-	-	-	-
	WWTP Headworks Grit Pumps Wemco 2 6x5	Proposed	Minor	100.0%	-	-	-	-
	Oven Replacements	Proposed	Minor	100.0%	-	-	-	-
	DAFT Overflow Pumps (2) Cornell	Proposed	Minor	100.0%	-	-	-	-
	Secondary PS VFD Replacement	Proposed	Minor	100.0%	-	-	-	-
	Secondary PS Pump Rebuild (3)	Proposed	Minor	100.0%	-	-	-	-
	Micro Residual Analyzers Replacements	Proposed	Minor	100.0%	-	-	-	-
	WWTP Paving	Proposed	Minor	100.0%	-	-	-	-
	River Park PS VFD/Electric Sys	Proposed	Minor	100.0%	-	-	-	-
	Filter Air Compressor Overhaul	Proposed	Minor	100.0%	-	-	-	-
	Digester Heat Exchangers	Proposed	Minor	100.0%	-	-	-	-
	Portable 10" Pump Replacement	Proposed	Minor	100.0%	-	-	-	-
	Digester Draft Tube Overhaul	Proposed	Minor	100.0%	-	-	-	-
	Wash Pumps (2)	Proposed	Minor	100.0%	-	-	-	-
	Ultrapure Water System Replacements	Proposed	Minor	100.0%	-	-	-	-
	SCADA PLC Replacement	Proposed	Minor	100.0%	-	-	-	-
	Sample Refrigerator Replacements	Proposed	Minor	100.0%	-	-	-	-
	River Park PS Pump Rehab	Proposed	Minor	100.0%	-	-	-	-
	Septage System Pump Rehab 2 Wemco 6 x 5	Proposed	Minor	100.0%	-	-	-	-
	Amperometric Titrator Replacements	Proposed	Minor	100.0%	-	-	-	-
	Portable Generator	Full Program	Minor	100.0%	-	-	30,000	-
	Ion Chromatography System	Full Program	Minor	100.0%	-	-	-	33,000
	Bioassay System (Edition Upgrade)	Full Program	Minor	100.0%	-	-	-	-
	Balance Replacements	Full Program	Minor	100.0%	-	-	-	-
	Emergency Generators Overhaul (2)	Full Program	Minor	100.0%	-	-	-	-
<b>TOTAL ANNUAL EXPENDITURES (rounded)</b>					<b>\$7,575,000</b>	<b>\$3,463,000</b>	<b>\$5,120,000</b>	<b>\$4,450,000</b>

Capital Projects - TREATMENT

ID	Escalation = 3.0%/year	Urgency	Type	%	FY 06/07	FY 07/08	FY 08/09	FY09/10
		Full Program Proposed Critical	Major Minor Annual	Current		1	2	3
	<b>Subtotal Major Projects for</b>	<b>Proposed</b>			<b>\$7,019,000</b>	<b>\$3,026,000</b>	<b>\$4,169,000</b>	<b>\$4,044,000</b>
	Subtotal Major Projects "Critical"				5,059,000	1,417,000	-	-
	Subtotal Major Projects "Proposed"				1,960,000	1,609,000	4,169,000	4,044,000
	Subtotal Major Projects "Full Program"				375,000	309,000	859,000	328,000
	Major Projects w/ "Critical" & "Proposed"				7,019,000	3,026,000	4,169,000	4,044,000
	Total Major Projects All Urgency Classes				7,394,000	3,335,000	5,028,000	4,372,000
	Minor Projects				181,000	128,000	92,000	78,000
	<b>Current Users</b>							
	Proposed				4,066,004	2,284,492	2,559,904	2,450,664
	Minor				181,000	128,000	92,000	78,000
	<b>Subtotal Current Users - Treatment Projects</b>				<b>4,247,004</b>	<b>2,412,492</b>	<b>2,651,904</b>	<b>2,528,664</b>
	<b>Future Users</b>							
	Proposed				2,952,996	741,508	1,609,096	1,593,336
	Minor				-	-	-	-
	<b>Subtotal Future Users - Treatment Projects</b>				<b>2,952,996</b>	<b>741,508</b>	<b>1,609,096</b>	<b>1,593,336</b>
	<b>All Users</b>							
	Proposed				7,019,000	3,026,000	4,169,000	4,044,000
	Minor				181,000	128,000	92,000	78,000
	<b>Total: Treatment Projects</b>				<b>7,200,000</b>	<b>3,154,000</b>	<b>4,261,000</b>	<b>4,122,000</b>

Capital Projects - TREATMENT

ID	Escalation = 3.0%/year	FY 10/11	FY11/12	FY 12/13	FY 13/14	FY 14/15	FY 15/16	10-YEAR TOTAL
		4	5	6	7	8	9	
	Other Projects	-	-	-	-	-	-	-
1627	Pond Embankment Repair	-	-	-	-	-	-	-
1619	PLC Replacement Project	-	-	-	-	-	-	-
1606	Bioassay System	-	-	-	-	-	-	-
1621	IPS Pump Repair Project	-	-	-	-	-	-	-
1175	Misc. Plant Upgrades	-	-	-	-	-	-	-
1530	Plant Ventilation System Improvements	-	-	-	-	-	-	-
1613	Emergency Radios	-	-	-	-	-	-	-
1512	"As-built" Record Drawings Phase II	-	-	-	-	-	-	-
1318	Upgrade West Napa PS	-	-	-	-	-	-	-
1121	Pond Transfer Structures - Rehab	-	-	-	-	-	-	206,000
1122	Stonecrest PS Replacement & Force Main	-	-	-	-	-	-	2,350,000
1533	RW Reservoir Cover & Capacity Increase	-	-	-	-	-	-	1,600,000
1620	Pond 1 Biosolids Removal	-	-	-	-	-	-	1,000,000
	Somky Ranch Biosolids Project	-	-	-	-	-	-	1,015,000
1154	Telemetry Upgrade - Phase II	-	-	-	-	-	-	346,000
1524	Replace Admin Building Roof	-	-	-	-	-	-	210,000
	WWTP Master Plan	-	-	-	-	-	-	200,000
	SCADA PLC Conversion	-	-	119,000	-	-	-	279,000
	Influent PS Repair	-	-	-	-	-	-	253,000
1148	RWQCB Mandated Programs	-	-	-	-	-	-	113,000
	W Napa PS Pump 2 Replacement	-	-	-	-	-	-	100,000
1523	Cogen Modification Study and Conversion	-	-	-	-	-	-	75,000
	SCADA Master Plan Implementation	-	-	-	461,000	-	-	616,000
	Influent PS Seismic Study	-	-	-	-	-	-	50,000
	River Park PS Generator Replacement	-	-	-	-	-	-	35,000
	WWTP Service Water Filtration	-	-	-	-	-	-	30,000
	Jameson Canyon Pressure Station	-	-	-	-	-	-	51,000
	W Napa PS Ventilation	-	-	-	-	-	-	25,000
	North Napa PS Demolition	-	-	-	-	-	-	309,000
	Grease Receiving Station	-	-	-	-	-	-	258,000
	Secondary Clarifier Sluice Gates	-	-	-	-	-	-	258,000
	SCADA Upgrades	-	-	-	-	-	-	206,000
	Vactor Dump Site	-	-	-	-	-	-	206,000

## Capital Projects - TREATMENT

ID	Escalation = 3.0%/year	FY 10/11	FY11/12	FY 12/13	FY 13/14	FY 14/15	FY 15/16	10-YEAR TOTAL
		4	5	6	7	8	9	
		-	-	-	-	-	-	155,000
		-	-	-	-	-	-	155,000
		-	-	-	-	-	-	129,000
		-	-	-	-	-	-	846,000
		-	-	-	-	-	-	103,000
		-	-	-	-	-	-	103,000
		-	-	-	-	-	-	77,000
		-	-	72,000	-	-	-	134,000
		-	2,782,000	-	-	-	-	5,328,000
		-	-	-	-	-	-	4,302,000
		-	-	-	-	-	-	212,000
		-	-	-	-	-	104,000	189,000
		-	-	-	-	-	-	53,000
		-	-	-	-	-	-	164,000
		-	-	-	-	203,000	-	258,000
		2,251,000	-	-	-	-	-	2,251,000
		169,000	-	-	-	-	-	169,000
		84,000	-	-	-	-	-	84,000
		-	811,000	-	-	-	-	811,000
		-	-	179,000	-	-	-	179,000
		-	-	-	61,000	-	-	61,000
		-	-	-	-	127,000	-	127,000
		-	-	-	-	127,000	-	127,000
		-	-	-	-	95,000	-	95,000
		-	-	-	-	76,000	-	76,000
		-	-	-	-	-	78,000	78,000
		338,000	348,000	149,000	154,000	158,000	163,000	2,565,000
		-	-	-	-	-	-	75,000
		-	-	-	-	-	-	212,000
		-	-	-	-	-	-	159,000
		-	-	-	-	-	-	106,000
		-	-	-	-	-	-	64,000
		1,126,000	-	-	-	-	-	1,126,000

## Capital Projects - TREATMENT

ID	Escalation = 3.0%/year	FY 10/11	FY11/12	FY 12/13	FY 13/14	FY 14/15	FY 15/16	10-YEAR TOTAL
		4	5	6	7	8	9	
	WWTP Area Drain Line	900,000	-	-	-	-	-	900,000
	Add Small Aeration Blower	141,000	-	-	-	-	-	141,000
	SCADA Telemetry	28,000	-	-	-	32,000	-	60,000
	W Napa PS Replacement	-	3,710,000	-	-	-	-	3,710,000
	Filter Sand Removal and Inspection	-	116,000	-	-	-	-	116,000
	WWTP Equalization Basin	-	-	2,388,000	-	-	-	2,388,000
	Laboratory Refurbishing (Includes Fume Hoods)	-	-	597,000	-	-	-	597,000
	Biosolids Conveyance Line	-	-	-	2,460,000	-	5,219,000	7,679,000
	Pond Levee Road Grading	-	-	-	307,000	-	-	307,000
	Warehouse	-	-	-	-	253,000	-	253,000
	Rolling Stock Shelter	-	-	-	-	253,000	-	253,000
	Alternative Energy (Emergent Technology)	-	-	-	-	-	1,305,000	1,305,000
	GC-MS/HPLC	-	-	-	-	-	196,000	196,000
	Vehicle Replacement	68,000	-	-	-	76,000	-	235,000
	Residual Analyzers (Diox) Replacements	-	-	-	-	30,000	-	54,000
	Pond 4 PS Pump Rebuild (3)	-	-	-	-	-	39,000	101,000
	Catalytic Converter	-	-	-	-	-	-	20,000
	Polymer Tank Replacement (2)	-	-	-	-	-	-	20,000
	Fuel Conditioning	-	-	-	-	-	-	15,000
	Computer Replacements OIS Stations	-	-	7,000	-	-	-	19,000
	Automated Refrigerated Sampler Replacments	7,000	-	7,000	-	8,000	-	34,000
	Turbidimeters (7) Tertiary Replacements	-	-	11,000	-	-	-	21,000
	Micro Incubator Replacements	-	-	-	-	-	-	3,000
	Chemical Controller Replacement (14)	23,000	-	-	25,000	-	-	69,000
	Aeration Panel Replacement	-	17,000	-	-	-	20,000	52,000
	Pond Aerator Replacement	-	-	12,000	-	-	-	22,000
	Electric Carts	-	-	-	-	-	13,000	23,000
	Spectrophotometer	-	5,000	-	-	-	-	16,000
	Centrifuge Replacements	-	-	-	-	-	-	7,000
	UPS for Marsh and River Valves	-	-	-	-	-	-	27,000
	Digester Recirc Pumps (2) Wemco 6x5	-	9,000	36,000	-	10,000	-	63,000
	Portable 6" Pump Replacement	-	-	-	-	-	-	38,000
	Vehicle Replacement	28,000	-	-	-	-	-	28,000

## Capital Projects - TREATMENT

ID	Escalation = 3.0%/year	FY 10/11	FY11/12	FY 12/13	FY 13/14	FY 14/15	FY 15/16	10-YEAR TOTAL
		4	5	6	7	8	9	
	Digester Hot Water Pumps (3)	11,000	-	-	-	-	-	11,000
	DAFT Recirc Pumps (2) Gould	7,000	-	-	-	-	-	7,000
	WWTP Headworks Grit Pumps Wemco 2 6x5	6,000	-	-	-	-	-	6,000
	Oven Replacements	5,000	-	-	6,000	-	-	11,000
	DAFT Overflow Pumps (2) Cornell	5,000	-	-	-	-	-	5,000
	Secondary PS VFD Replacement	-	35,000	-	-	-	-	35,000
	Secondary PS Pump Rebuild (3)	-	35,000	-	-	-	-	35,000
	Micro Residual Analyzers Replacements	-	23,000	-	-	-	-	23,000
	WWTP Paving	-	-	60,000	-	-	-	60,000
	River Park PS VFD/Electric Sys	-	-	36,000	-	-	-	36,000
	Filter Air Compressor Overhaul	-	-	36,000	-	-	-	36,000
	Digester Heat Exchangers	-	-	30,000	-	-	-	30,000
	Portable 10" Pump Replacement	-	-	-	61,000	-	-	61,000
	Digester Draft Tube Overhaul	-	-	-	37,000	-	-	37,000
	Wash Pumps (2)	-	-	-	12,000	-	-	12,000
	Ultrapure Water System Replacements	-	-	-	6,000	-	-	6,000
	SCADA PLC Replacement	-	-	-	-	38,000	-	38,000
	Sample Refrigerator Replacements	-	-	-	-	7,000	7,000	14,000
	River Park PS Pump Rehab	-	-	-	-	-	26,000	26,000
	Septage System Pump Rehab 2 Wemco 6 x 5	-	-	-	-	-	7,000	7,000
	Amperometric Titrator Replacements	-	-	-	-	-	5,000	5,000
	Portable Generator	-	-	-	-	-	-	30,000
	Ion Chromatography System	-	-	-	-	13,000	-	46,000
	Bioassay System (Edition Upgrade)	-	-	-	-	44,000	-	44,000
	Balance Replacements	-	-	-	-	8,000	-	8,000
	Emergency Generators Overhaul (2)	-	-	-	-	-	39,000	39,000
								-
	<b>TOTAL ANNUAL EXPENDITURES (rounded)</b>	<b>\$5,197,000</b>	<b>\$7,891,000</b>	<b>\$3,739,000</b>	<b>\$3,590,000</b>	<b>\$1,558,000</b>	<b>\$7,221,000</b>	<b>49,804,000</b>

Capital Projects - TREATMENT

ID	Escalation = 3.0%/year	FY 10/11	FY11/12	FY 12/13	FY 13/14	FY 14/15	FY 15/16	10-YEAR TOTAL
		4	5	6	7	8	9	
	<b>Subtotal Major Projects for</b>	<b>\$2,504,000</b>	<b>\$3,593,000</b>	<b>\$370,000</b>	<b>\$522,000</b>	<b>\$628,000</b>	<b>\$182,000</b>	<b>\$26,057,000</b>
	Subtotal Major Projects "Critical"	-	-	119,000	-	-	-	6,595,000
	Subtotal Major Projects "Proposed"	2,504,000	3,593,000	251,000	522,000	628,000	182,000	19,462,000
	Subtotal Major Projects "Full Program"	2,533,000	4,174,000	3,134,000	2,921,000	696,000	6,883,000	22,212,000
	Major Projects w/ "Critical" & "Proposed"	2,504,000	3,593,000	370,000	522,000	628,000	182,000	26,057,000
	Total Major Projects All Urgency Classes	5,037,000	7,767,000	3,504,000	3,443,000	1,324,000	7,065,000	48,269,000
	Minor Projects	160,000	124,000	235,000	147,000	234,000	156,000	1,535,000
	<b>Current Users</b>							
	Proposed	1,517,424	2,177,358	252,588	316,332	380,568	151,268	16,156,602
	Minor	160,000	124,000	235,000	147,000	234,000	156,000	1,535,000
	<b>Subtotal Current Users - Treatment Projects</b>	<b>1,677,424</b>	<b>2,301,358</b>	<b>487,588</b>	<b>463,332</b>	<b>614,568</b>	<b>307,268</b>	<b>17,691,602</b>
	<b>Future Users</b>							
	Proposed	986,576	1,415,642	117,412	205,668	247,432	30,732	9,900,398
	Minor	-	-	-	-	-	-	-
	<b>Subtotal Future Users - Treatment Projects</b>	<b>986,576</b>	<b>1,415,642</b>	<b>117,412</b>	<b>205,668</b>	<b>247,432</b>	<b>30,732</b>	<b>9,900,398</b>
	<b>All Users</b>							
	Proposed	2,504,000	3,593,000	370,000	522,000	628,000	182,000	26,057,000
	Minor	160,000	124,000	235,000	147,000	234,000	156,000	1,535,000
	<b>Total: Treatment Projects</b>	<b>2,664,000</b>	<b>3,717,000</b>	<b>605,000</b>	<b>669,000</b>	<b>862,000</b>	<b>338,000</b>	<b>27,592,000</b>

**Capital Projects - RECYCLING**

ID	Escalation = 3.0%/year	Urgency	Type	% Current	FY 06/07	FY 07/08	FY 08/09	FY 09/10
						1	2	3
		Full Program	Major					
		Proposed	Minor					
		Critical	Annual					
1625	Jameson Reclamation Site - Sprinkler Rehab	Critical	Major	100.0%	-	-	-	-
	WaterReuse Debt Service	Critical	Major	0.0%	623,200	628,900	629,150	629,100
1124	Reclamation Pipelines	Critical	Major	0.0%	500,000	-	-	-
	Recycled Water Strategic Plan	Proposed	Major	0.0%	430,000	-	-	-
	Aquifer Storage Recovery Evaluation	Proposed	Major	100.0%	221,400	-	-	-
	Tractor (190-210hp)	Critical	Major	0.0%	200,000	-	-	-
1233	Jameson Canyon Water Recovery System	Proposed	Major	0.0%	70,000	-	-	-
	Biosolids Pod Holding Site Jameson	Proposed	Major	0.0%	60,000	-	-	-
	Jameson Pump Station Rehab	Critical	Major	0.0%	50,000	-	-	-
	Rec. Site Automation Upgrades	Critical	Major	0.0%	40,000	-	-	-
	Kennedy Ppark Conversion	Proposed	Major	0.0%	40,000	-	-	-
	Irrigation System Piping (Jameson Fields)	Proposed	Major	0.0%	-	103,000	-	-
	Telemetry Upgrades	Proposed	Major	0.0%	-	77,000	-	-
	Reuse Program Video Update	Proposed	Major	0.0%	-	52,000	-	-
	Perennial Field Cover (alfalfa, clover)	Critical	Major	0.0%	-	36,000	-	-
	Reuse Program Manual Update	Critical	Major	0.0%	-	31,000	-	-
	Permanent Recycled Water Line to Airport (18")	Proposed	Major	0.0%	-	-	796,000	-
	Tractor (50-80hp)	Proposed	Major	0.0%	-	-	-	-
	Dedicated Biosolids Line to Jameson	Full Program	Major	100.0%	-	3,090,000	-	-
	Vehicle Replacement	Critical	Minor	100.0%	65,000	-	-	-
	Biosolids Spreader	Critical	Minor	100.0%	35,000	-	-	-
	PTO Spray Equipment (100gal 3pt w/ Boom)	Critical	Minor	100.0%	15,000	-	-	-
	Storage Bldg for Parts-Tools	Critical	Minor	100.0%	7,000	-	-	-
	Pull Flail Chopper Replacement	Proposed	Minor	100.0%	-	-	-	-
<b>TOTAL ANNUAL EXPENDITURES (rounded)</b>					<b>\$2,356,600</b>	<b>\$4,017,900</b>	<b>\$1,425,150</b>	<b>\$629,100</b>
<b>Subtotal Major Projects for Proposed</b>					<b>\$2,234,600</b>	<b>\$927,900</b>	<b>\$1,425,150</b>	<b>\$629,100</b>
Subtotal Major Projects "Critical"					1,413,200	695,900	629,150	629,100
Subtotal Major Projects "Proposed"					821,400	232,000	796,000	-
Subtotal Major Projects "Full Program"					-	3,090,000	-	-



**Capital Projects - RECYCLING**

ID	Escalation = 3.0%/year	FY 10/11	FY 11/12	FY 12/13	FY 13/14	FY 14/15	FY 15/16	10-YEAR TOTAL
		4	5	6	7	8	9	
1625	Jameson Reclamation Site - Sprinkler Rehab	-	-	-	-	-	-	-
	WaterReuse Debt Service	628,750	628,100	627,150	630,900	629,200	632,200	6,286,650
1124	Reclamation Pipelines	-	-	-	-	-	-	500,000
	Recycled Water Strategic Plan	-	-	-	-	-	-	430,000
	Aquifer Storage Recovery Evaluation	-	-	-	-	-	-	221,400
	Tractor (190-210hp)	-	-	-	-	-	-	200,000
1233	Jameson Canyon Water Recovery System	-	-	-	-	-	-	70,000
	Biosolids Pod Holding Site Jameson	-	-	-	-	-	-	60,000
	Jameson Pump Station Rehab	-	-	-	-	-	-	50,000
	Rec. Site Automation Upgrades	-	-	-	-	-	-	40,000
	Kennedy Ppark Conversion	-	-	-	-	-	-	40,000
	Irrigation System Piping (Jameson Fields)	-	-	-	-	-	-	103,000
	Telemetry Upgrades	-	-	-	-	-	-	77,000
	Reuse Program Video Update	-	-	-	-	-	-	52,000
	Perennial Field Cover (alfalfa, clover)	-	-	-	-	-	-	36,000
	Reuse Program Manual Update	-	-	-	-	-	-	31,000
	Permanent Recycled Water Line to Airport (18")	-	-	-	-	-	-	796,000
	Tractor (50-80hp)	-	87,000	-	-	-	-	87,000
	Dedicated Biosolids Line to Jameson	-	-	-	-	-	-	3,090,000
	Vehicle Replacement	39,000	-	-	-	-	85,000	189,000
	Biosolids Spreader	-	-	-	-	-	-	35,000
	PTO Spray Equipment (100gal 3pt w/ Boom)	-	-	-	-	-	-	15,000
	Storage Bldg for Parts-Tools	-	-	-	-	-	-	7,000
	Pull Flail Chopper Replacement	25,000	-	-	31,000	-	-	56,000
<b>TOTAL ANNUAL EXPENDITURES (rounded)</b>		<b>\$692,750</b>	<b>\$715,100</b>	<b>\$627,150</b>	<b>\$661,900</b>	<b>\$629,200</b>	<b>\$717,200</b>	<b>12,472,050</b>
<b>Subtotal Major Projects for</b>		<b>\$628,750</b>	<b>\$715,100</b>	<b>\$627,150</b>	<b>\$630,900</b>	<b>\$629,200</b>	<b>\$632,200</b>	<b>\$9,080,050</b>
	Subtotal Major Projects "Critical"	628,750	628,100	627,150	630,900	629,200	632,200	7,143,650
	Subtotal Major Projects "Proposed"	-	87,000	-	-	-	-	1,936,400
	Subtotal Major Projects "Full Program"	-	-	-	-	-	-	3,090,000

Capital Projects - RECYCLING

ID	Escalation = 3.0%/year	FY 10/11	FY 11/12	FY 12/13	FY 13/14	FY 14/15	FY 15/16	10-YEAR TOTAL
		4	5	6	7	8	9	
	Major Projects w/ "Critical" & "Proposed"	628,750	715,100	627,150	630,900	629,200	632,200	9,080,050
	Total Major Projects All Urgency Classes	628,750	715,100	627,150	630,900	629,200	632,200	12,170,050
	Minor Projects	64,000	-	-	31,000	-	85,000	302,000
	<b>Current Users</b>							
	Proposed	-	-	-	-	-	-	221,400
	Minor	64,000	-	-	31,000	-	85,000	302,000
	<b>Subtotal Current Users - Recycling Projects</b>	<b>64,000</b>	<b>-</b>	<b>-</b>	<b>31,000</b>	<b>-</b>	<b>85,000</b>	<b>523,400</b>
	<b>Future Users</b>							
	Proposed	628,750	715,100	627,150	630,900	629,200	632,200	8,858,650
	Minor	-	-	-	-	-	-	-
	<b>Subtotal Future Users - Recycling Projects</b>	<b>628,750</b>	<b>715,100</b>	<b>627,150</b>	<b>630,900</b>	<b>629,200</b>	<b>632,200</b>	<b>8,858,650</b>
	<b>All Users</b>							
	Proposed	628,750	715,100	627,150	630,900	629,200	632,200	9,080,050
	Minor	64,000	-	-	31,000	-	85,000	302,000
	<b>Total: Recycling Projects</b>	<b>692,750</b>	<b>715,100</b>	<b>627,150</b>	<b>661,900</b>	<b>629,200</b>	<b>717,200</b>	<b>9,382,050</b>



Capital Projects - OTHER

ID	Escalation = 3.0%/year	Urgency	Type	% Current	FY 06/07	FY 07/08	FY 08/09	FY 09/10
		Full Program	Major					
		Proposed	Minor					
		Critical	Annual					
<b>Subtotal Major Projects for Proposed</b>					<b>\$400,200</b>	<b>\$307,200</b>	<b>\$315,200</b>	<b>\$322,200</b>
Subtotal Major Projects "Critical"					400,200	307,200	315,200	322,200
Subtotal Major Projects "Proposed"					-	-	-	-
Subtotal Major Projects "Full Program"					-	-	-	-
Major Projects w/ "Critical" & "Proposed"					400,200	307,200	315,200	322,200
Total Major Projects All Urgency Classes					400,200	307,200	315,200	322,200
Minor Projects					-	-	-	-
<b>Current Users</b>								
Proposed					380,500	307,200	315,200	322,200
Minor					-	-	-	-
<b>Subtotal Current Users - Other Projects</b>					<b>380,500</b>	<b>307,200</b>	<b>315,200</b>	<b>322,200</b>
<b>Future Users</b>								
Proposed					19,700	-	-	-
Minor					-	-	-	-
<b>Subtotal Future Users - Other Projects</b>					<b>19,700</b>	<b>-</b>	<b>-</b>	<b>-</b>
<b>All Users</b>								
Proposed					400,200	307,200	315,200	322,200
Minor					-	-	-	-
<b>Total: Other Projects</b>					<b>400,200</b>	<b>307,200</b>	<b>315,200</b>	<b>322,200</b>



Capital Projects - OTHER

ID	<i>Escalation = 3.0%/year</i>	FY 10/11	FY 11/12	FY 12/13	FY 13/14	FY 14/15	FY 15/16	10-YEAR TOTAL
	<b>Subtotal Major Projects for</b>	<b>\$330,200</b>	<b>\$338,200</b>	<b>\$347,200</b>	<b>\$355,200</b>	<b>\$364,200</b>	<b>\$373,200</b>	<b>\$3,453,000</b>
	Subtotal Major Projects "Critical"	330,200	338,200	347,200	355,200	364,200	373,200	3,453,000
	Subtotal Major Projects "Proposed"	-	-	-	-	-	-	-
	Subtotal Major Projects "Full Program"	-	-	-	-	-	-	-
	Major Projects w/ "Critical" & "Proposed"	330,200	338,200	347,200	355,200	364,200	373,200	3,453,000
	Total Major Projects All Urgency Classes	330,200	338,200	347,200	355,200	364,200	373,200	3,453,000
	Minor Projects	-	-	-	-	-	-	-
	<b><u>Current Users</u></b>							
	Proposed	330,200	338,200	347,200	355,200	364,200	373,200	3,433,300
	Minor	-	-	-	-	-	-	-
	<b>Subtotal Current Users - Other Projects</b>	<b>330,200</b>	<b>338,200</b>	<b>347,200</b>	<b>355,200</b>	<b>364,200</b>	<b>373,200</b>	<b>3,433,300</b>
	<b><u>Future Users</u></b>							
	Proposed	-	-	-	-	-	-	19,700
	Minor	-	-	-	-	-	-	-
	<b>Subtotal Future Users - Other Projects</b>	<b>-</b>	<b>-</b>	<b>-</b>	<b>-</b>	<b>-</b>	<b>-</b>	<b>19,700</b>
	<b><u>All Users</u></b>							
	Proposed	330,200	338,200	347,200	355,200	364,200	373,200	3,453,000
	Minor	-	-	-	-	-	-	-
	<b>Total: Other Projects</b>	<b>330,200</b>	<b>338,200</b>	<b>347,200</b>	<b>355,200</b>	<b>364,200</b>	<b>373,200</b>	<b>3,453,000</b>