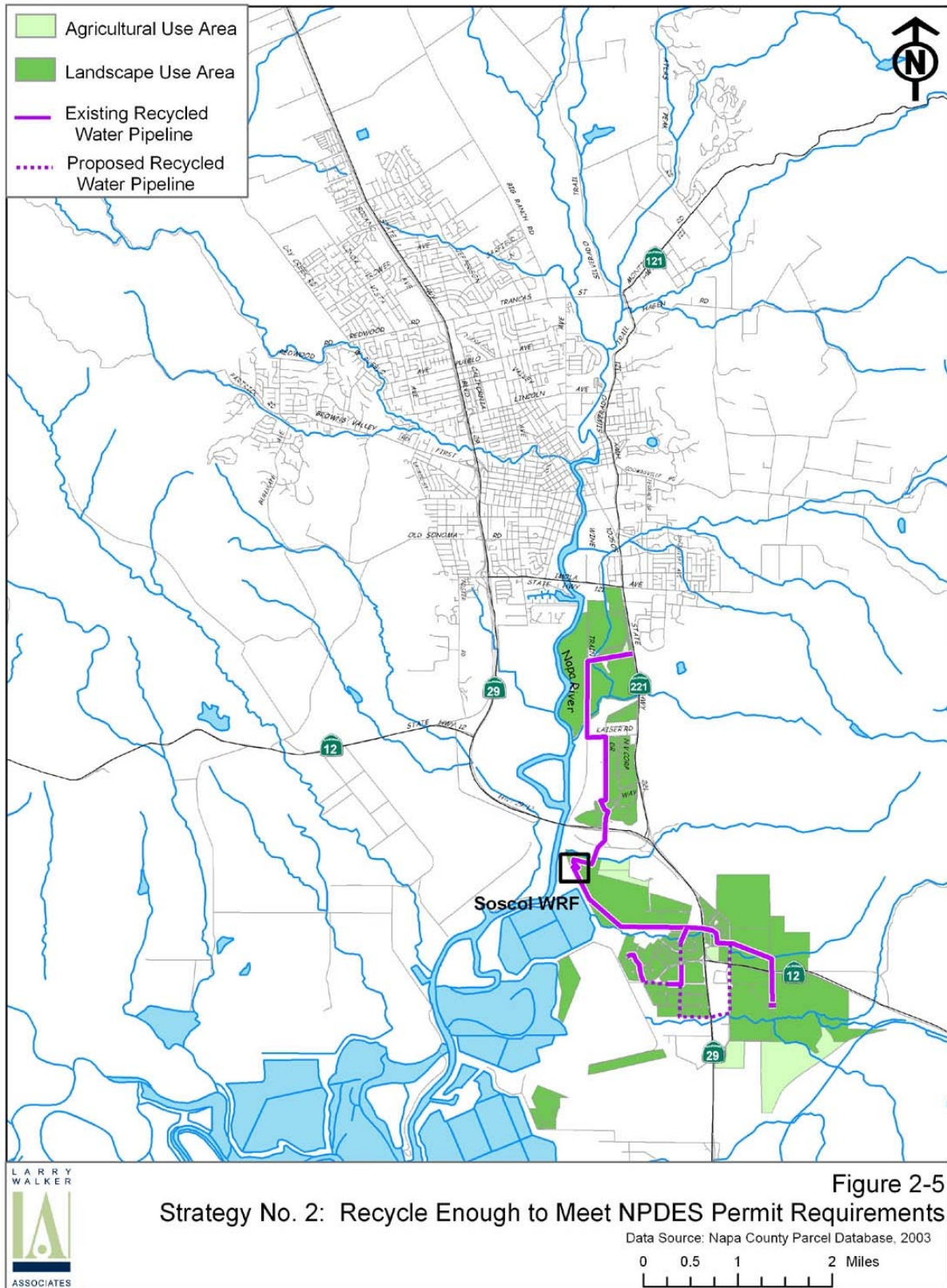


Strategy No. 2 Recycle Enough to Meet NPDES Permit Requirements



Strategy No. 2 – Recycle Enough to Meet NPDES Permit Requirements Summary Table

Goal of Strategy No. 2: Recycle enough effluent in the Year 2020 to reliably meet the dry weather discharge prohibition.

Recycled Water Use Area:	1,698 acres
Volume of Recycled Water Delivery:	3,590 acre-ft/yr
Type of Users:	Landscape, Agricultural, Reclamation
Existing District Reclamation Sites Included:	Somky Ranch, Jameson Canyon, Fagundes Ranch, Airport Area, and parcels leased to Eagle Vines
Existing District Reclamation Sites Not Included:	None (all sites included)
Additional Recycled Water Storage Needed:	None
Number of New Pump Stations Required:	0
Number of Distribution System Storage Tanks:	0
Increased Filter Capacity Required:	0 mgd
Estimated Total Capital Costs (\$, millions)	\$1.91
Estimated Additional O&M Costs:	\$39,400 per year