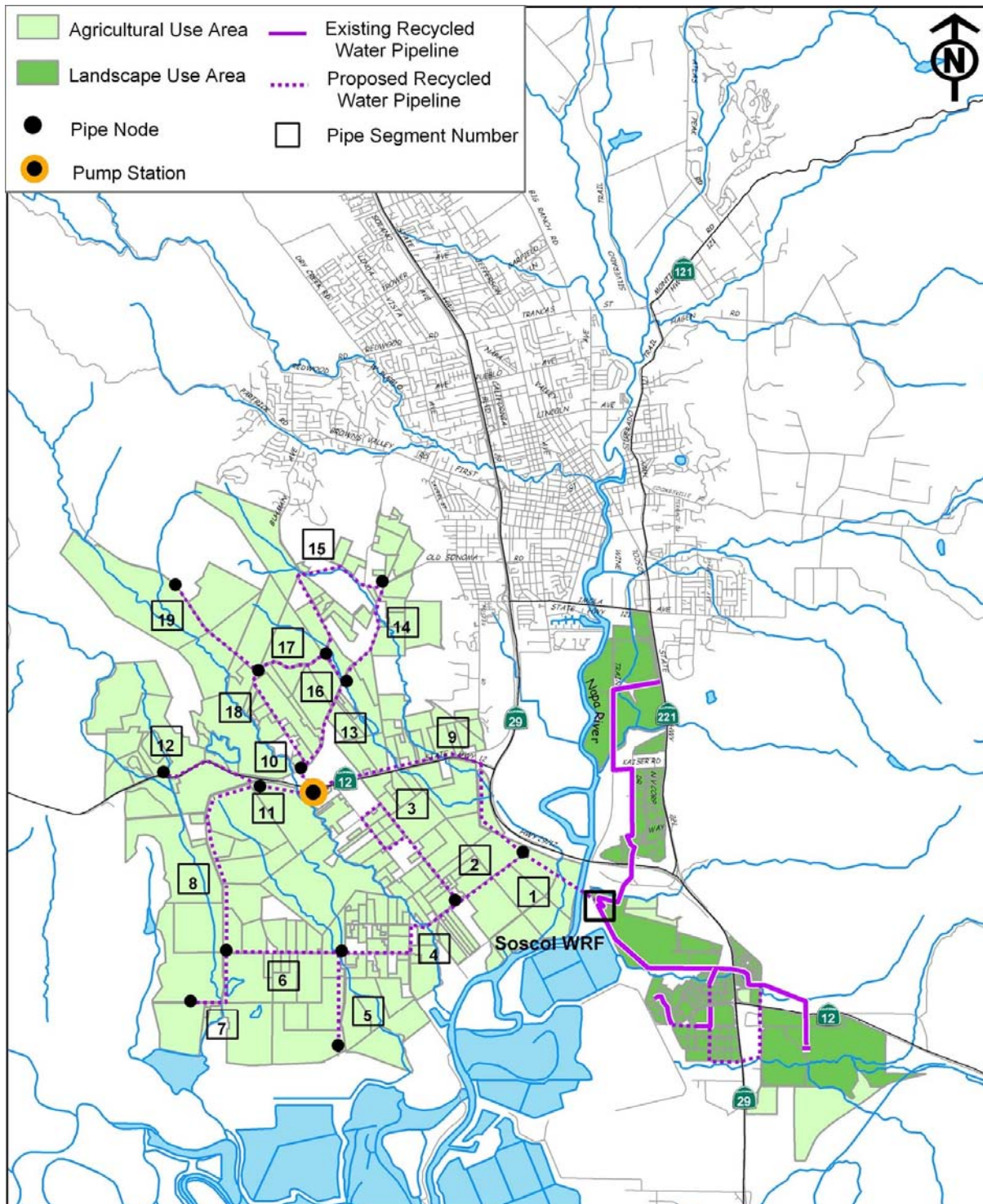
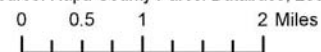


# Strategy No. 4 Maximize Use of Existing Storage (Least Pipeline Cost)



**Figure 2-9**  
**Strategy No. 4: Maximize Use of Existing Storage (Least Pipeline Cost)**  
 Data Source: Napa County Parcel Database, 2003



## Strategy No. 4 - Maximize Use of Existing Storage (Least Pipeline Cost)

### Summary Table

Goal of Strategy No. 4: Use existing storage facilities to deliver as much recycled water as possible while minimizing capital outlay for pipeline construction.

<b>Recycled Water Use Area:</b>	7,575 acres
<b>Volume of Recycled Water Delivery:</b>	4,280 acre-ft/yr
<b>Type of Users:</b>	Landscape, Agricultural, Reclamation
<b>Existing District Reclamation Sites Included:</b>	Somky Ranch and parcels leased to Eagle Vines
<b>Existing District Reclamation Sites Not Included:</b>	Fagundes Ranch, Airport area, and Jameson Canyon
<b>Additional Recycled Water Storage Needed:</b>	None
<b>Number of New Pump Stations Required:</b>	1
<b>Number of Distribution System Storage Tanks:</b>	0
<b>Increased Filter Capacity Required:</b>	3.0 mgd
<b>Estimated Total Capital Costs (\$, millions)</b>	\$34.9
<b>Estimated Additional O&amp;M Costs:</b>	\$431,000 per year