

Strategy No. 7 Maximize Use of Existing Storage (Augment Water Supply)

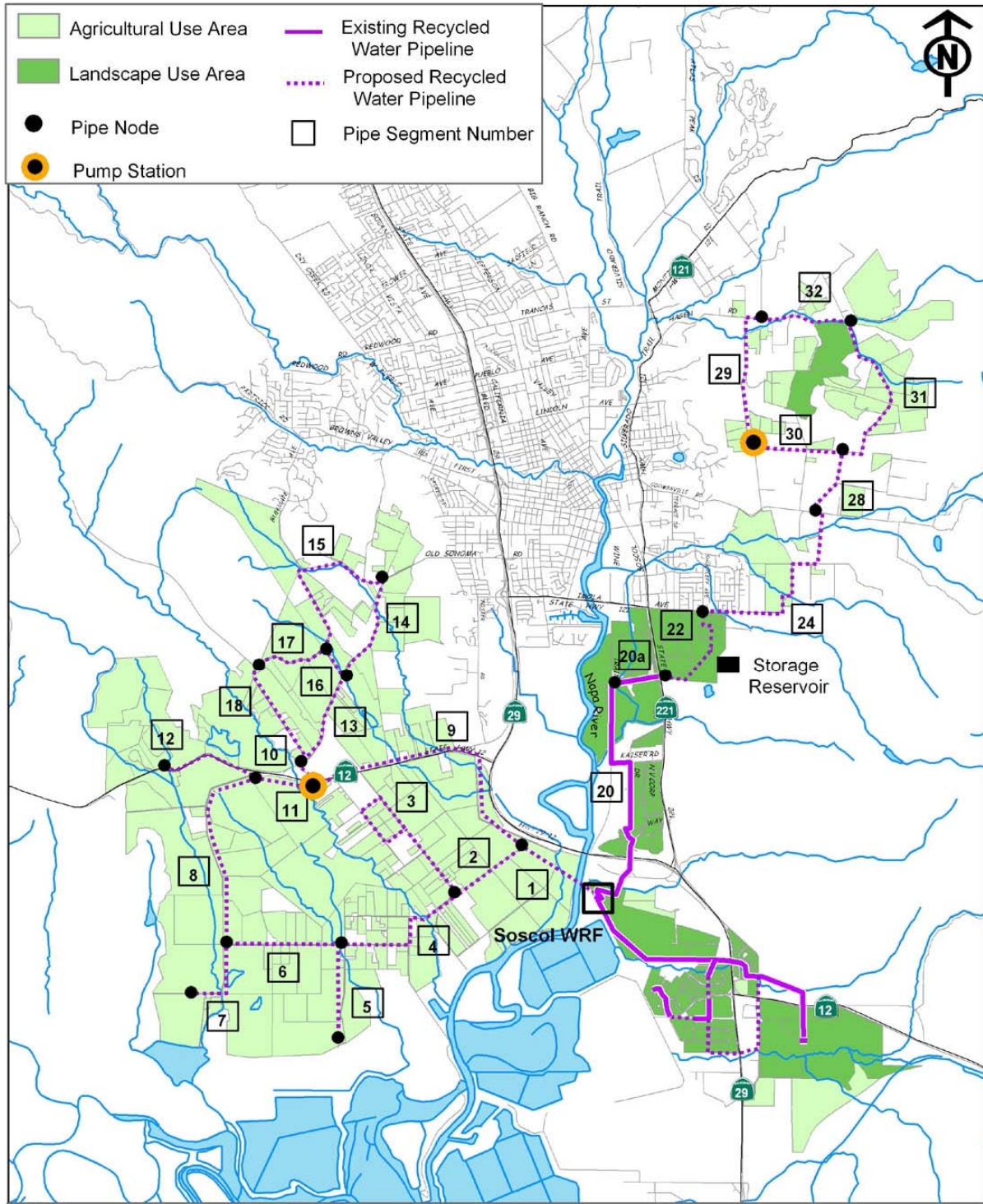


Figure 2-15
Strategy No. 7: Maximize Use of Existing Storage (Augment Water Supply)

Data Source: Napa County Parcel Database, 2003
0 0.5 1 2 Miles

Strategy No. 7 – Maximize Use of Existing Storage (Augment Water Supply)

Summary Table

Goal of Strategy No. 7: Use existing storage facilities to deliver as much recycled water as possible to water-short areas of Napa County.

Recycled Water Use Area:	7,662 acres
Volume of Recycled Water Delivery:	4,260 acre-ft/yr
Type of Users:	Landscape, Agricultural, Reclamation
Existing District Reclamation Sites Included:	Somky Ranch and parcels leased to Eagle Vines
Existing District Reclamation Sites Not Included:	Jameson Canyon, Fagundes Ranch, and Airport area
Additional Recycled Water Storage Needed:	None
Number of New Pump Stations Required:	2
Number of Distribution System Storage Tanks:	1
Increased Filter Capacity Required:	3.0 mgd
Estimated Total Capital Costs (\$, millions)	\$62.9
Estimated Additional O&M Costs:	\$482,000 per year